

PARTS BOOK

KM-341BL

고속 1본침 본봉 상하송 재봉기
High Speed, 1-Needle, Upper and Lower
Feed Lock Stitch Machine W/Large Hook



PME-110107

SunStar CO., LTD.

INFORMATION

A. Parts Book 구성 Structure of Part Book

① **A** Machine Body Mechanism
두부 및 외장 관계

④ ⑤ ⑥ ⑦ ⑧ ⑨

No.	Parts No.	Note.	Name of Parts	품 명	Q'ty BS BB	Assembly No.
A-52	418028-00H		Bobbin Winder Lever	실감기 레버	1	1
A-53	418018-00H		Bobbin Winder Adjusting Plate	실감기 조절판	1	1
A-54	SC-6130-1230		Screw(1.6" n=40)	볼트(실감기)	1	1
A-55	02-011W-2302		Washer	와셔	1	1
A-56	418028-00H		Bobbin Winder Lever Shaft	실감기 레버 축	1	1
A-57	418048-00H		Bobbin Winder Adjusting Cam	실감기 조절 캠	1	1
A-58	030200-4113		Screw(M4*PN3)	볼트(실감기)	1	1
A-59	04-006C-0210		E-Ring(#5)	E-링(실감기)	2	2
A-60	418028-00H		Bobbin Winder Action Plate	실감기 작동판	1	1
A-61	41-088A-120H		Bobbin Winder Action Body	실감기 작동체	1	1
A-62	40-007W-1000		Washer	와셔	2	2
A-63	418028-00H		Bobbin Winder Spring	실감기 탄압 스프링	1	1
A-64	418028-00H		Bobbin Stopper	보빈 스톱퍼	1	1
A-65	418028-00H		Screw	볼트(실감기)	5	5
A-66	418028-00H		Bobbin Stand	보빈 스탠드	1	1
A-67	418028-00H		Bobbin Winder Mn	실감기 메인	1	1
A-68	SC-609-2302		Screw(1.6" n=40)	고장체스 실감기 조절나사	2	2
A-69	418028-00H		Thread Tension Adjusting Ass'y	실감기 실감력 조절장치(조)	1Set	1Set
A-70	418028-00H		Thread Tension Adjusting Shaft	실감기 실감력 조절 축	1	1
A-71	418028-00H		Thread Guide Plate	실감기 안내판	1	1
A-72	40-204A-1230		Thread Tension Disk	실감기 실감력 조절 디스크	2	2
A-73	40-330G-123A		Thread Tension Spring	실감기 실감력 조절 스프링	1	1
A-74	40-800W-1230		Thread Tension Spring Stopper	실감기 실감력 조절 스프링 스톱퍼	1	1
A-75	40-024A-1230		Spring Cover	스프링 커버	1	1
A-76	40-204A-2250		Thread Tension Nut	실감기 실감력 조절 너트	1	1
A-77	SN-0131-1400		Nut(15/16" n=20)	실감기 실감력 조절 축 너트	1	1
A-78	018048-00H		Safety Plate Ass'y	안전판(조)	1Set	1Set
A-79	018048-00H		Safety Plate	안전판	1	1
A-80	018048-00H		Safety Plate Bracket	안전판 브라켓	1	1
A-81	018048-00H		Safety Plate Holder	안전판 홀더	1	1
A-82	018048-00H		Safety Plate Hinge Screw	안전판 힌지 나사	1	1
A-83	SN-0101-1400		Nut(1/2" n=20)	니트	3	3
A-84	40-007W-1000		Washer	와셔	1	1
A-85	018048-00H		Safety Plate Spring	안전판 스프링	1	1
A-86	018048-00H		Safety Plate Spring Hook	안전판 스프링 걸이	1	1
A-87	SN-0111-1600		Nut(1/2" n=20)	니트	1	1
A-88	GP-012250-02		Bolt Cover	볼트 커버	1	1
A-89	SC-9465-1230		Screw(11/16" n=40)	볼트(실감기)	7	7
A-90	GP-012251-00		X-Driving Motor Cover	제 구동 모터 커버	1	1
A-91	GP-012217-00		Side Cover	옆뚜껑	1	1
A-92	GP-012215-00		Side Cover Gasket	옆뚜껑 가스켓	1	1

- ① 관계 별 고유 코드
Unique code by mechanism
- ② 관계 별 고유 명칭
Unique name by mechanism
- ③ 관계도
Explode view
- ④ Ref. No. : 파트별 고유 식별 번호
Unique identification number by part
- ⑤ Parts No. : 고유 제품 코드
Unique Product code

- ⑥ Note. : 공지사항 표기 및 메모
Refers to notice and memo
- ⑦ 품명 : 파트의 고유 품명
Name of Part : Unique name of parts
- ⑧ Q'ty : 파트의 수량
The numer of parts
- ⑨ Assembly no. : 조(組) 파트의 식별 번호
Unique identification number by set part

Ex)

구분 Category	Code	비고 Category
구 부품 Old part	01-030C-1230	
신 부품 New part	AS-000000-00	조(組)파트 Set parts
	GP-000000-00	기구적 파트 Instrumental parts
	EP-000000-00	전기적 파트 Electrical parts

WARNING

1. 조에 속한 파트는 개별 조립 시 제품의 파손 또는 재봉 불량 발생될 수 있어 해당 파트에 대한 주문 시에는 조 품목으로만 구입이 가능합니다.
2. 본 책자는 Part Book으로 제작되었으므로 매뉴얼로 사용 불가합니다.
3. 사전 예고 없이 사양이 변경 될 수도 있습니다.

1. The parts classified as ass'y items may cause damage to the machine or bad sewing when they are separately assembled. Hence, when they are ordered, they can be purchased as ass'y items only.
2. This is a parts book. It cannot be used as a manual.
3. Parts are Subject to change in Design Without Prior Notice.

CONTENTS

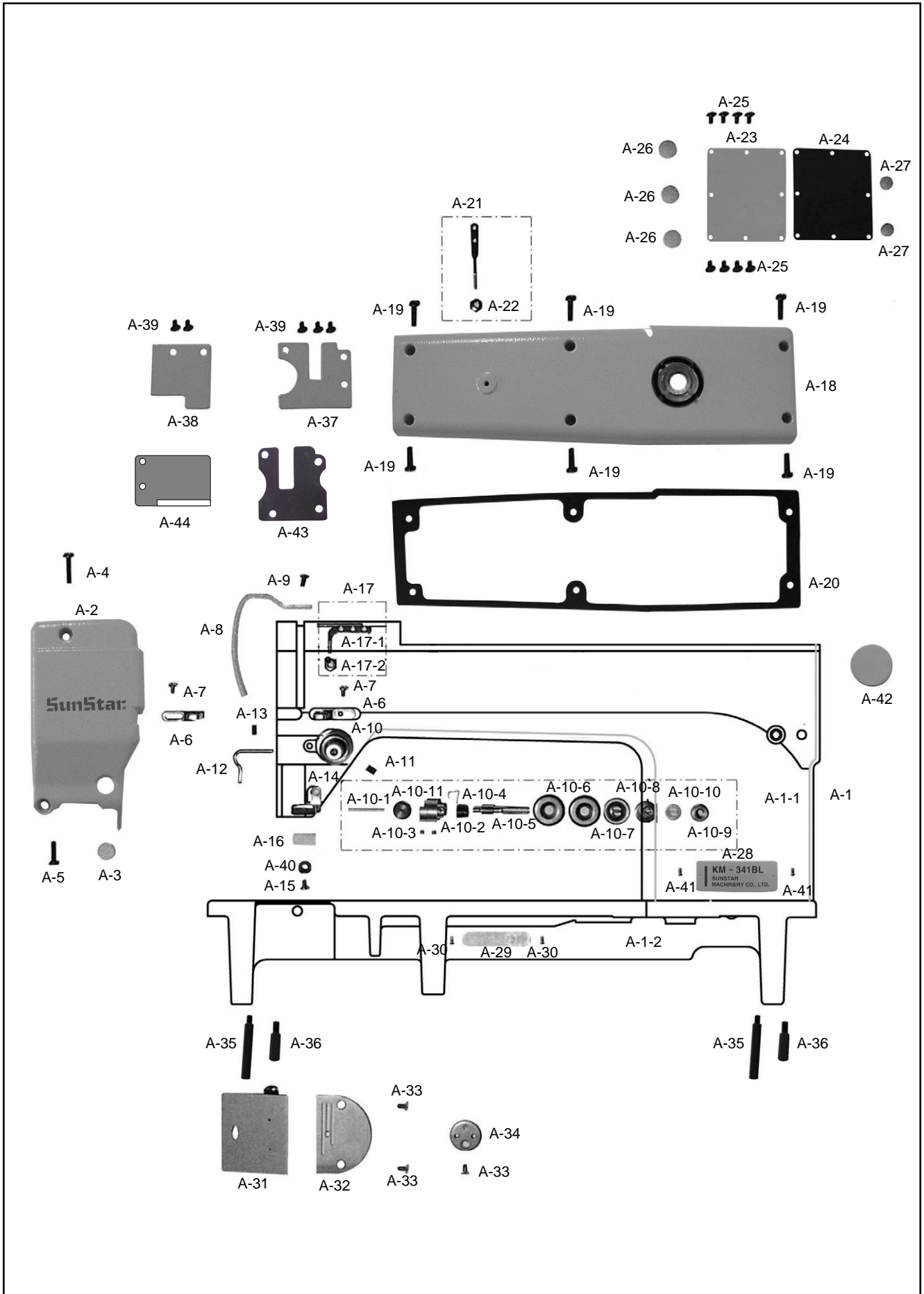
목 차

A	<i>Machine Body & Thread Tension Adjusting Mechanism</i> 외장 및 실장력 조절관계.....	6
B	<i>Upper Shaft & Needle Bar & Upright Shaft & Lower Shaft Mechanism</i> 상축, 바늘대 및 입축, 하축관계.....	8
C	<i>Presser Foot & Upper Feed Mechanism</i> 노루발 및 상피이드 관계.....	10
D	<i>Lower Feed Mechanism</i> 하피이드 관계.....	12
E	<i>Presser Bar & Knee Lifting Mechanism</i> 누름대 및 무릎올림 관계.....	14
F	<i>Lubrication</i> 급유 관계.....	16
G	<i>Accessories</i> 액세서리 관계.....	18
	* INDEX.....	20

NOTE : Parts are Subject to change in Design Without Prior Notice.

1. 조에 속한 파트는 개별 조립 시 제품의 파손 또는 재봉 불량 발생될 수 있어 해당 파트에 대한 주문 시에는 조 품목으로만 구입이 가능합니다.
 2. 본 책자는 Parts Book으로 제작되었으므로 매뉴얼로 사용 불가합니다.
1. The parts classified as ass'y items may cause damage to the machine or bad sewing when they are separately assembled. Hence, when they are ordered, they can be purchased as ass'y items only.
 2. This is a parts book. It cannot be used as a manual.

Machine Body & Thread Tension Adjusting Mechanism 외장 및 실장력 조절관계



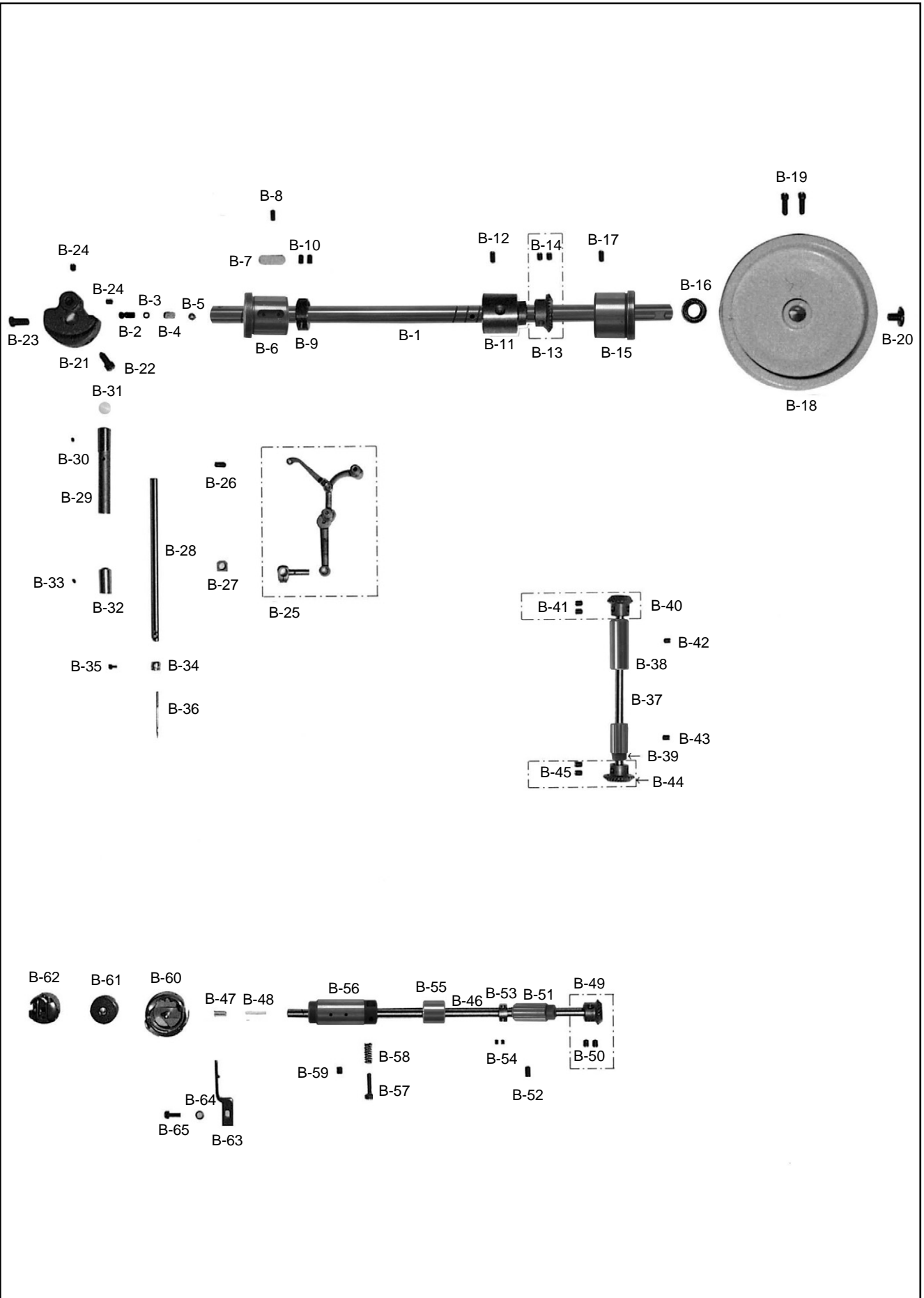


Ref. No.	Parts No.	Note	Name of Parts	품명	Q'ty	Applied Period
A-1	AS-001960-07		Arm Bed Ass' Y	암 베드(조)	1	
A-1-1	CAB-AA005801		Arm	암	1	
A-1-2	CAB-AB004701		Bed	베드	1	
A-2	CMB-LA024700		Face Plate	면판	1	
A-3	DPK-CB000200		Rubber Plug(Needle Bar Adjusting Hole)	면판고무마개 (중) 흰색 (3)	1	
A-4	DSC-BA003000		Screw(11/64" N = 40)	면판첩나사하 - 신형(4118)	1	
A-5	DSC-BF001200		Screw(11/64" N = 40)	가마잡이나사(4122)	1	
A-6	CMB-HK005900		Thread Guide For A-1	암실안내	2	
A-7	DSC-BA000100		Screw (9/64" N = 40)	오일펌프커버나사(2118)	2	
A-8	CMB-LA013100		Cover For Take-Up Lever	실체기커버	1	
A-9	DSC-BJ000200		Screw(11/64" N = 40)	톱커버힌지고정나사(4525)	1	
A-10	ATA-PS002800		Tension Completed Ass' Y	실조절장치	1	
A-10-1	DPN-AA003800		Tension Release Pin	사조자핀	1	
A-10-2	CTA-BA000200		Tension Past Socket	실조절 장치부싱	1	
A-10-3	DSC-CA000200		Set Screw For A-10-5	실조절장치축고정나사	2	
A-10-4	DSP-BB000200		Check Spring	뽕뽕스프링 (D - 1 4 6)	1	
A-10-5	CTA-HM000500		Tension Stud	실조절장치축	1	
A-10-6	CTA-HL000100		Tension Disk	실안내접시	2	
A-10-7	CTA-BJ000200		Tension Release Washer	실조절스프링받침	1	
A-10-8	DSP-BA002300		Tension Spring	실장력조절스프링(123B)	1	
A-10-9	CTA-BJ000100		Ratchet For A-10-10	실장력조절스프링스토퍼	1	
A-10-10	DSN-CD000100		Tension Adjusting Knob	실조절장치조절너트	1	
A-10-11	DPK-CZ000200		Tension Completed Rubber Cap	실조절장치고무캡	1	
A-11	DSC-CA000100		Screw (15/64" N = 28)	피이드캠고정나사(만금)(4515)	1	
A-12	CMB-HK006000		Thread Guide Front	곡봉실결이	1	
A-13	DSC-CA000600		Screw(11/64" N = 40)	곡봉실결이나사(4515)	1	
A-14	CLB-BG004500		Upper Thread Oil Felt Case	윗실급유펠트잡이	1	
A-15	DSC-BA000100		Screw (9/64" N = 40)	오일펌프커버나사(2118)	1	
A-16	CLB-JL007300		Upper Thread Oil Felt	윗실급유펠트	1	
A-17	AMB-PS000800		Thread Guide With Three Holes Ass' Y	세구멍실결이(조)K	1	
A-17-1	CMB-HK000300		Thread Guide With Three Holes	세구멍실결이	1	
A-17-2	DSN-AA000100		Nut For A-17	세구멍실결이너트	1	
A-18	CMB-LA023900		Top Cover	윗뚜껑	1	
A-19	DSC-BF001200		Screw(11/64" N = 40)	가마잡이나사(4122)	6	
A-20	CMB-FC007400		Top Cover Gasket	윗뚜껑가스켓	1	
A-21	CMB-HK002000		Guide Bar For Thread	실안내봉	1	
A-22	DSN-AA000100		Nut For A-21	세구멍실결이너트	1	
A-23	CMB-LB009900		Back Cover	뒷뚜껑	1	
A-24	CMB-FC007700		Back Cover Gasket	뒷뚜껑가스켓	1	
A-25	SC-0248-7400		Screw(9/64" N = 40)	홈볼이 냄비 작은나사	8	
A-26	DPK-CB000200		Rubber Plug For A-1	면판고무마개 (중) 흰색 (3)	3	
A-27	DPK-CB002900		Rubber Plug For A-1	면판고무마개(소)흰색(5)	2	
A-28	CMB-LD013400		Model Mark	모델마크	1	
A-29	CMB-BJ006600		Machine Number Plate	번호판	1	
A-30	PPN-AD000100		Setting Pin For A-29	번호판핀	2	
A-31	CMB-LB004400		Slide Plate Ass' Y	미끄럼판(조)	1	
A-32	CGA-GA001500		Needle Plate	바늘판	1	
A-33	DSC-BC000100		Screw(11/64" N = 40)	홈볼이 접시 작은나사	3	
A-34	CMB-BJ002400		Holder For Attachment	게이지부착판	1	
A-35	CMB-BB009400		Bed Support A	베드받침 A	2	
A-36	DSC-HC001500		Bed Support B	베드받침 B	2	
A-37	CMB-LB010000		Arm Back Side Cover A	암후면커버 A	1	
A-38	CMB-LB010100		Arm Back Side Cover B	암후면커버 B	1	
A-39	DSC-BJ001400		Screw(9/64" N = 40)	홈볼이 바인딩 작은나사	5	
A-40	DWS-AA010800		Washer	실리콘급유탱크와셔	1	
A-41	PPN-AD000100		Pin	모델마크핀	2	
A-42	DPK-CA000300		Upper Feed Driving Shaft (Large) Rubber Cap	노루발수평운동축고무마개	1	
A-43	CMB-FC007200		Arm Back Side Cover A-Gasket	후면커버 A 가스켓	1	
A-44	CMB-FC007300		Arm Back Side Cover B-Gasket	후면커버 B 가스켓	1	

B

Upper Shaft & Needle Bar & Upright Shaft & Lower Shaft Mechanism

상축, 바늘대 및 입축, 하축 관계

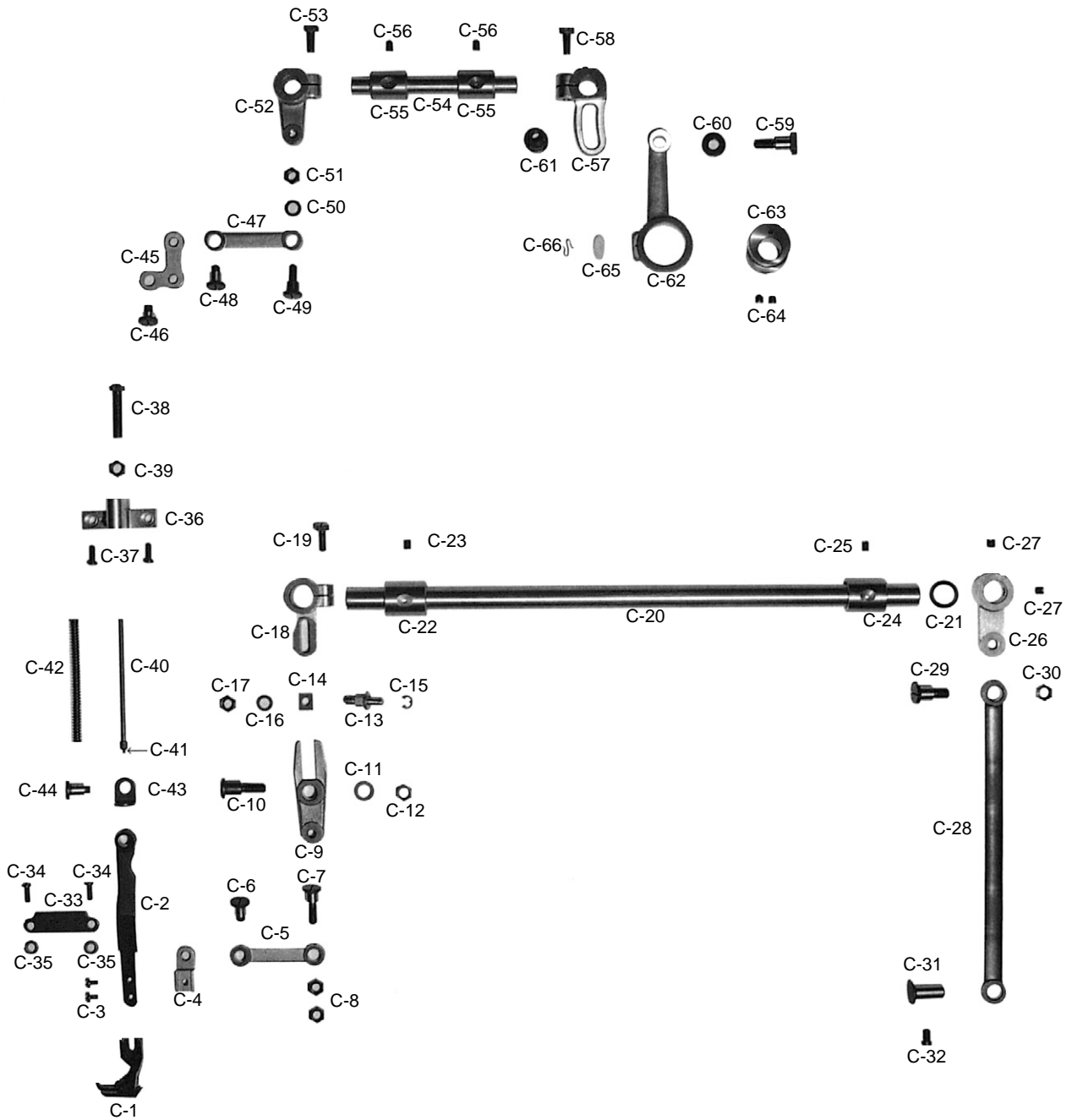




Ref. No.	Parts No.	Note	Name of Parts	품명	Q'ty	Applied Period
B-1	CUS-KC003300		Main Shaft	상축	1	
B-2	CUS-CH000101		Oil Adjusting Pin For B-1	상축유량조절핀	1	
B-3	PPK-BA000400		O-Ring For B-2	상축유량조절핀 O-링	1	
B-4	CLB-JL001600		Upper Shaft Felt	상축펠트	1	
B-5	DWS-AA019000		Upper Shaft Urethan Washer	상축우레탄와셔	1	
B-6	DBS-DB010700		Main Shaft Bushing(Front)	상축전부싱	1	
B-7	CLB-JL007400		Oil Felt For B-6	상축앞부싱펠트	1	
B-8	DSC-CA000800		Screw(15/64" N = 28)	상축부싱고정나사(4515)	1	
B-9	DCL-AA011100		Main Shaft Collar	메스작동캠카라	1	
B-10	DSC-CA001100		Screw(1/4" N = 40)	실채기핀고정나사(4515)	2	
B-11	DBS-DA016900		Main Shaft Bushing (Center)	상축중부싱	1	
B-12	DSC-CA000800		Screw(15/64" N = 28)	상축부싱고정나사(4515)	1	
B-13	DGR-AD000100		Main Shaft Gear	상축기어(국산)	1	
B-14	DSC-CA005400		Screw(1/4" N = 40)	홈볼이멈춤나사	2	
B-15	DBS-DB010800		Main Shaft Bushing (Rear)	상축후부싱	1	
B-16	PPK-AA000100		Oil Seal For B-15	상축후부싱오일셀	1	
B-17	DSC-CA000800		Screw(15/64" N = 28)	상축부싱고정나사(4515)	1	
B-18	DPL-AA000800		Pulley	폴리(도장품)	1	
B-19	DSC-BF000800		Screw(15/64" N = 28)	폴리고정나사(4122)	2	
B-20	CUS-DA003500		Screw (5/16" N = 24)	폴리큰나사(4124)	1	
B-21	CUS-DA003500		Counter Weight	링크캠	1	
B-22	DSC-BF003700		Screw(9/32" N = 28)	링크캠위치고정나사(4422)	1	
B-23	DSC-BF011500		Screw(9/32" N = 28)	홈볼이납작작은나사	1	
B-24	DSC-CA000500		Screw(1/4" N = 40)	홈볼이멈춤나사(SC15)	2	
B-25	ATH-SM000600		Thread Take Up Lever Ass' Y	실채기(조)	1	
B-25-1	CTH-HJ001800		Thread Take Up Lever	실채기	1	
B-25-2	CTH-CB0001900		Needle Bar Crank	바늘대크랭크	1	
B-25-3	CTH-CB000900		Thread Take Up Lever Crank	실채기크랭크	1	
B-25-4	CTH-CC001300		Needle Bar Crank Rod	바늘대크랭크로드	1	
B-25-5	CNB-BF001600		Needle Bar Holder	바늘대잡이	1	
B-25-6	DPN-BC003300		Thread Take Up Lever Hinge Pin	실채기힌지핀	1	
B-25-7	DSC-BF013500		Needle Bar Crank Screw(Left)	바늘대크랭크왼나사	1	
B-25-8	DSC-BF001500		Needle Bar Holder Screw	바늘대잡이나사	1	
B-26	DSC-CA000800		Screw(15/64" N = 28)	상축부싱고정나사(4515)	1	
B-27	CNB-BK001000		Sliding Block For B-25	바늘대안대블럭	1	
B-28	CNB-CR000200		Needle Bar	바늘대	1	
B-29	DBS-DA019200		Needle Bar Upper Bushing	바늘대상부싱(C)	1	
B-30	DSC-CA002400		Screw(11/64" N = 40)	바늘대부싱나사(4515)	1	
B-31	DPK-CB000800		Rubber Cap For B-29	바늘대상부싱마개(흰색)	1	
B-32	DBS-DA017000		Needle Bar Lower Bushing	바늘대하부싱(C)	1	
B-33	DSC-CA002400		Screw(11/64" N = 40)	바늘대부싱나사(4515)	1	
B-34	CNB-HK001400		Thread Guide	바늘대실결이	1	
B-35	DSC-BF000100		Screw(1/8" N = 44)	홈볼이납작작은나사(SC22)	1	
B-36	-		Needle	바늘	1	
B-37	CUR-KC000600		Upright Shaft	입축	1	
B-38	DBS-DA014101		Upright Shaft Bushing(Upper)	입축상부싱	1	
B-39	DBS-DA014201		Upright Shaft Bushing(Lower)	입축하부싱	1	
B-40	DGR-AD000200		Upright Shaft Gear(Upper)	입축상기어(국산)	1	
B-41	DSC-CA000500		Screw(1/4" N = 40)	홈볼이멈춤나사(SC15)	2	
B-42	DSC-CA000100		Screw (15/64" N = 28)	피이드캠고정나사(만금) (4515)	1	
B-43	DSC-CA000100		Screw (15/64" N = 28)	피이드캠고정나사(만금) (4515)	1	
B-44	DGR-AD000300		Upright Shaft Gear(Lower)	입축하기어(국산)	1	
B-45	DSC-CA000500		Screw(1/4" N = 40)	홈볼이멈춤나사(SC15)	2	
B-46	CLS-KC003600		Lower Shaft	하축	1	
B-47	CLB-JL002400		Lower Shaft Felt	하축펠트	1	
B-48	DSC-BF007000		Cap Screw For Lower Shaft Oil Felt	하축오일펠트꽃이나사	1	
B-49	DGR-AD000400		Lower Shaft Gear (Rear)	하축뒷기어(국산)	1	
B-50	DSC-CA000500		Screw(1/4" N = 40)	홈볼이멈춤나사(SC15)	2	
B-51	DBS-DA032700		Lower Shaft Bushing(Rear)	하축후부싱	1	
B-52	DSC-CA000100		Screw (15/64" N = 28)	피이드캠고정나사(만금) (4515)	1	
B-53	DCL-AA003700		Lower Shaft Collar	오일펌프카라(B) 7.94×17×8	1	
B-54	DSC-CB000300		Screw(11/64" N = 40)	하축중베어링부싱나사(4517)	2	
B-55	DBS-DA032000		Lower Shaft Bushing(Center)	하축중부싱	1	
B-56	DBS-DA032300		Lower Shaft Bushing(Front)	하축전부싱	1	
B-57	DSC-BF004000		Screw(3/16" N = 32)	하축오일조절나사	1	
B-58	DSP-AA001600		Spring For C-57	혹급유조절나사스프링	1	
B-59	DSC-CA000100		Screw (15/64" N = 28)	피이드캠고정나사(만금) (4515)	1	
B-60	CHK-HA003300		Rotary Hook	가마HSM-B(ISU)	1	
B-61	CHK-HB000700		Bobbin	보빈	1	
B-62	CHK-HC000500		Bobbin Case Ass' Y	보빈케이스	1	
B-63	CHK-HH000400		Hook Retainer	가마잡이	1	
B-64	DWS-CA000100		Spring Washer For C-65	가마잡이와셔	1	
B-65	DSC-BF003100		Screw (11/64" N = 40)	가마잡이나사(국산) (4122)	1	



Presser Foot & Upper Feed Mechanism 노루발 및 상피이드 관계

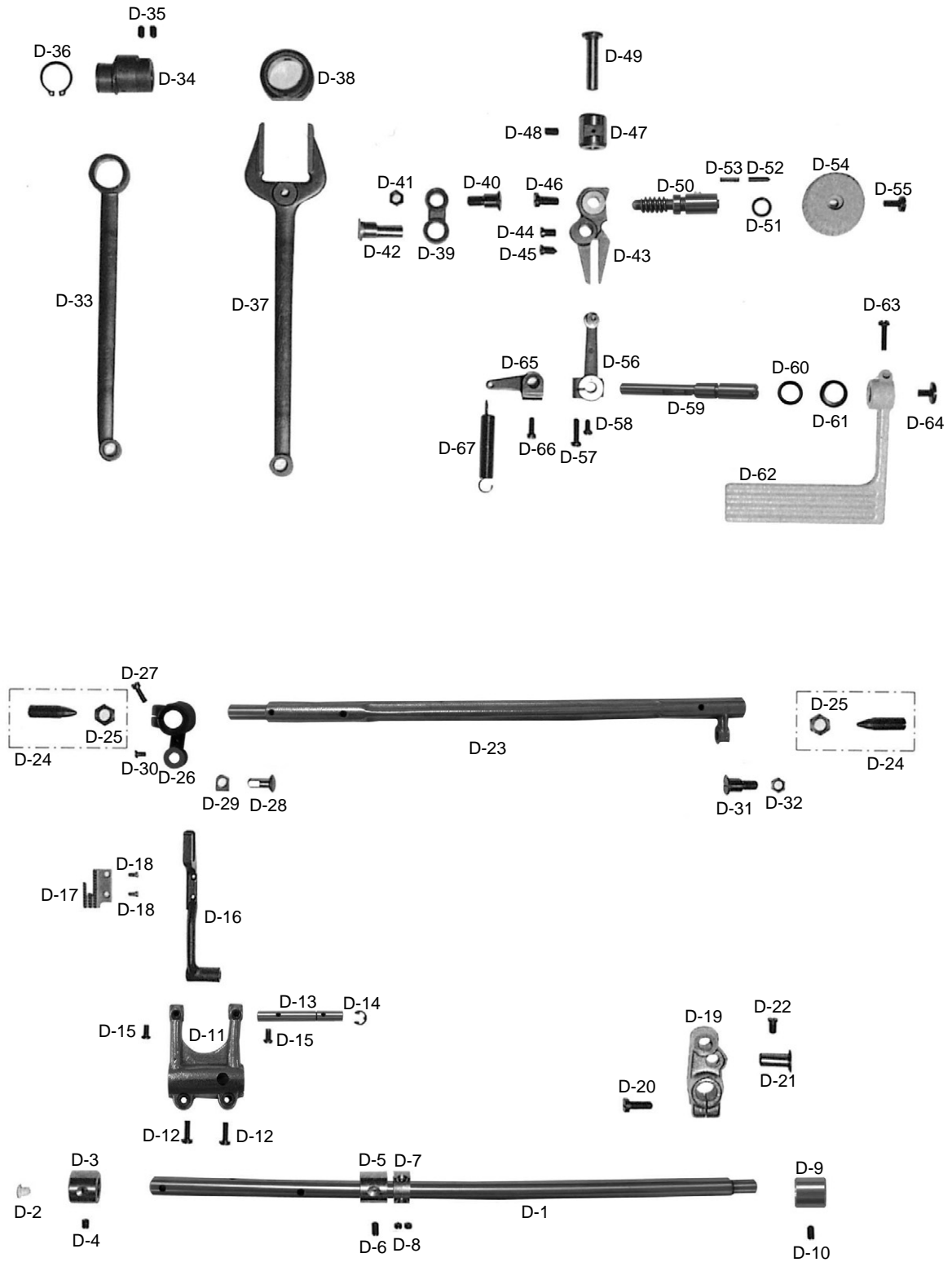




Ref. No.	Parts No.	Note	Name of Parts	품명	Q'ty	Applied Period
C-1	CGA-GC002301		Main Presser Foot Assembly	주노루발	1	
C-2	CUF-CM000101		Upper Feed Lever	노루발운동레버(C)	1	
C-3	DSC-BA000900		Screw(9/64" N = 40)	면판측면커버나사(하) (4118)	2	
C-4	CUF-BF000100		Upper Feed Lever Holder	노루발운동레버잡이(C)	1	
C-5	CUF-CC000600		Upper Feed Driving Rod(49Mm)	수평운동로드49MM(C)	1	
C-6	DSC-FA015400		Hinge Screw For D-5	노루발운동레버링크단나사	1	
C-7	DSC-FA015800		Hinge Screw For D-5	수평운동로드단나사	1	
C-8	DSN-AA000400		Nut (15/64" N = 28)	수평운동로드단나사너트(4000)	2	
C-9	CUF-CA000400		Upper Feed Adjusting Link	노루발수평운동링크	1	
C-10	DSC-FA015700		Hinge Screw For D-9	수평운동링크단나사	1	
C-11	DWS-AA011800		Washer For D-10	역진레버와셔	1	
C-12	DSN-AA002200		Nut (9/32" N = 28)	피이드조절기연결나사너트(4000)	1	
C-13	CUF-KZ000100		Connecting Stud Shaft	수평운동조절축	1	
C-14	CUF-CD000100		Block	노루발수평운동축블럭(C)	1	
C-15	PSR-AC000300		Stop Ring For D-13(Φ4)	인상판E링	1	
C-16	DWS-AA014400		Washer For D-13	포크웍나사와셔	1	
C-17	DSN-AA000500		Nut (1/4" N = 40)	수평운동조절축너트(4000)	1	
C-18	CUF-CB000600		Upper Feed Adjusting Crank	수평운동조절크랭크(C)	1	
C-19	DSC-AA002900		Screw(15/64" N = 28)	수평운동조절크랭크웍나사	1	
C-20	CUF-KC000900		Upper Feed Driving Shaft (Large)	노루발수평운동축	1	
C-21	PPK-BA000900		O-Ring	노루발대수평운동축 O-Ring	1	
C-22	DBS-DA018400		Bushing For D-20(Front)	수평운동축앞B/S(14.72×23×27)	1	
C-23	DSC-CA000100		Screw (15/64" N = 28)	피이드캠고정나사(만금) (4515)	1	
C-24	DBS-DA020500		Rear Bushing	수평운동축후부싱(C)	1	
C-25	DSC-CA000100		Screw (15/64" N = 28)	피이드캠고정나사(만금) (4515)	1	
C-26	CUF-CB003900		Rear Crank	노루발수평운동축크랭크후(C)	1	
C-27	DSC-CA000500		Screw(1/4" N = 40)	흡블이멈춤나사(SC15)	2	
C-28	CUF-CC000500		Upper Feed Driving Shaft Rod	노루발수평운동축로드(C)	1	
C-29	DSC-FA015300		Hinge Screw For D-28	노루발수평운동축로드단나사	1	
C-30	DSN-AA002200		Nut (9/32" N = 28)	피이드조절기연결나사너트(4000)	1	
C-31	DPN-AD008000		Connection Pin For D-28	와이로드연결핀	1	
C-32	DSC-BF000400		Screw (15/64" N = 28)	톱니받침축고정나사(4522)	1	
C-33	CUF-BJ000100		Upper Feed Lever Support Plate	노루발운동레버지지판	1	
C-34	DSC-BJ000400		Screw (11/64" N = 40)	윗뚜껑웍나사(4125)	2	
C-35	CUF-BN000100		Support Ring For D-33	노루발운동레버지지판링	2	
C-36	CUF-BA000200		Frame For D-41	노루발압력조절나사후레임	1	
C-37	DSC-BJ000400		Screw (11/64" N = 40)	윗뚜껑웍나사(4125)	2	
C-38	DSC-BF013800		Screw(9/32" N = 40)	보조압력조절나사(4122)	1	
C-39	DSN-AA002200		Nut (9/32" N = 28)	피이드조절기연결나사너트(4000)	1	
C-40	CUF-KC000300		Sub-Pressure Adjusting Pole	보조노루발압력조절봉	1	
C-41	CUF-BA000300		Support Plate For D-36	보조노루발압력조절스프링받침	1	
C-42	DSP-AA007800		Spring For D-36	보조압력조절스프링	1	
C-43	CUF-BB000100		Support Plate For D-36	보조노루발압력봉받침	1	
C-44	DSC-FA016000		Hinge Screw For D-2	노루발운동레버단나사	1	
C-45	CUF-CA000300		L-Shaped Link	노루발운동레버링크	1	
C-46	DSC-FA015500		Hinge Screw For D-8	누름대올리기브라켓연결단나사	1	
C-47	CUF-CC000400		Upper Feed Driving Rod 51MM	노루발상하운동로드51MM(C)	1	
C-48	DSC-FA015400		Hinge Screw For D-47	노루발운동레버링크단나사	1	
C-49	DSC-FA015600		Hinge Screw For D-52	노루발상하운동축크랭크단나사	1	
C-50	DWS-AA014400		Washer For D-49	포크웍나사와셔	1	
C-51	DSN-AA000400		Nut (15/64" N = 28)	수평운동로드단나사너트(4000)	1	
C-52	CUF-CB000400		Front Crank	노루발상하운동축크랭크전(C)	1	
C-53	DSC-AA002900		Screw(15/64" N = 28)	수평운동조절크랭크웍나사	1	
C-54	CUF-KC000100		Upper Feed Driving Shaft (Small)	노루발상하운동축	1	
C-55	DBS-DA018300		Bushing For D-54	노루발상하운동축부싱	2	
C-56	DSC-CA000100		Screw (15/64" N = 28)	피이드캠고정나사(만금) (4515)	2	
C-57	CUF-CB000500		Upper Feed Adjusting Crank	노루발상하운동조절크랭크(C)	1	
C-58	DSC-AA002900		Screw(15/64" N = 28)	수평운동조절크랭크웍나사	1	
C-59	DSC-FB002100		Upper Feed Adjusting Shaft	노루발상하운동조절축	1	
C-60	DWS-AA005400		Washer For D-59	노루발상하운동조절축와셔	1	
C-61	DSN-CZ000800		Nut For D-59	노루발상하운동조절너트	1	
C-62	CUF-CC002701		Connecting Rod	노루발상하운동캠로드(C)	1	
C-63	CUF-DC000100		Feed Driving Eccentric Cam	노루발상하운동캠	1	
C-64	DSC-CA000500		Screw(1/4" N = 40)	흡블이멈춤나사(SC15)	2	
C-65	CLB-JL007700		Oil Felt	노루발상하운동캠로드급유felt	1	
C-66	CLB-BH001800		Oil Felt Holder	상하운동캠로드유심잡이	1	

D

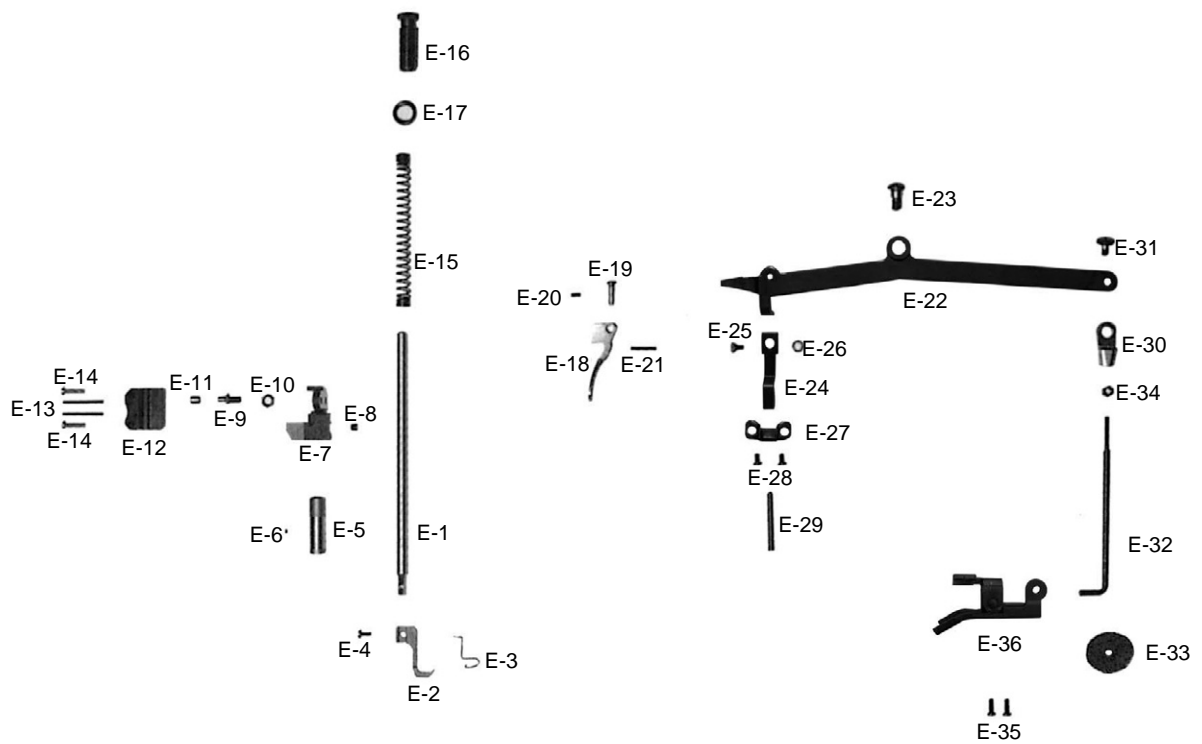
Lower Feed Mechanism 하피이드관계



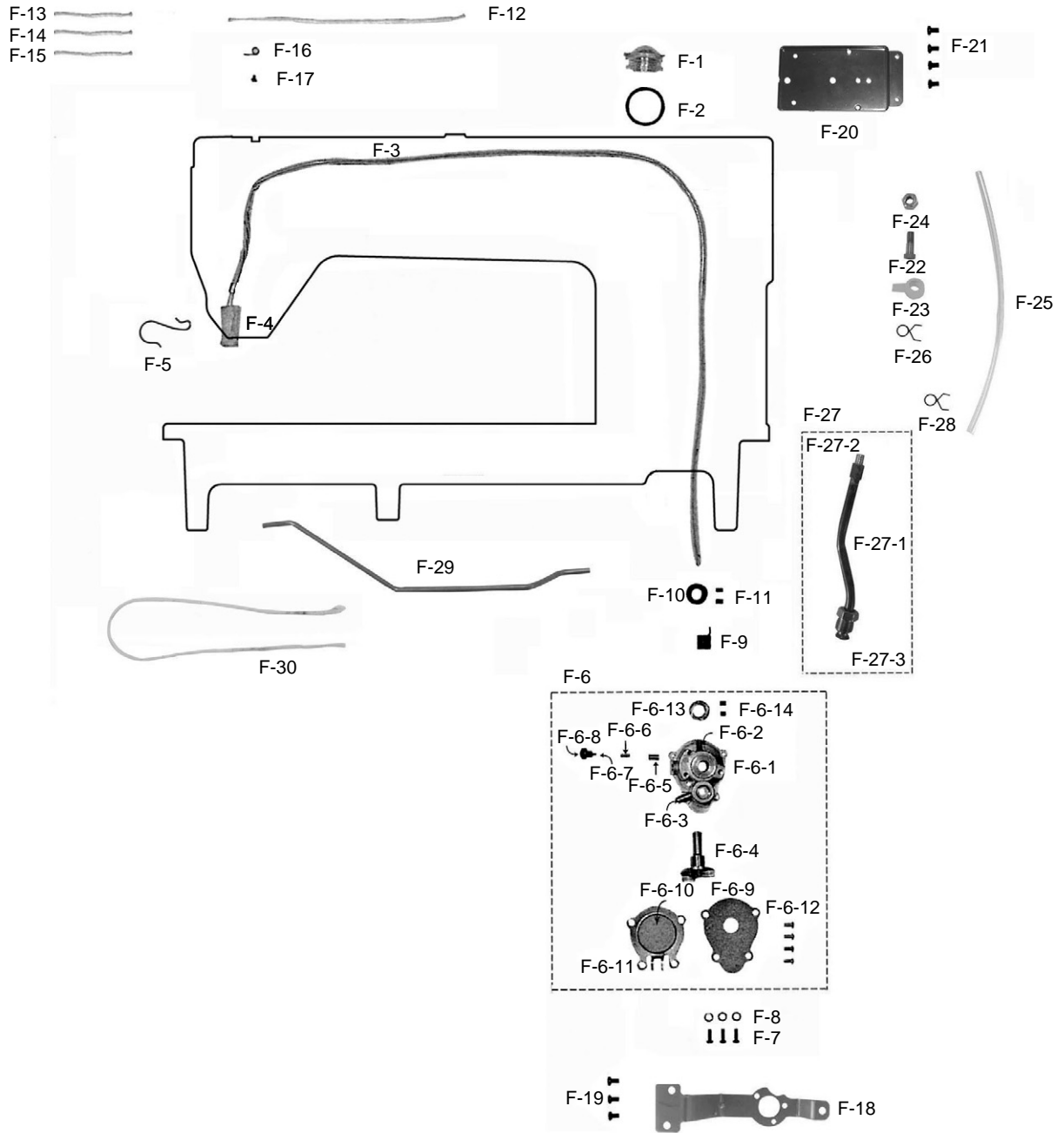
Ref. No.	Parts No.	Note	Name of Parts	품명	Q'ty	Applied Period
D-1	CLF-KF001300		Feed Rocker Shaft	수평밀대	1	
D-2	DPK-CB002500		Feed Rocker Shaft Rubber Cap	수평밀대 고무마개	1	
D-3	DBS-DA017900		Feed Rocker Shaft Front Bushing	수평밀대 앞부싱(C)	1	
D-4	DSC-CA000100		Screw (15/64" N = 28)	피이드캠 고정나사(만금) (4515)	1	
D-5	DBS-DA018000		Bushing For E-1(Center)	수평밀대중B/S 14.72×22.5×20	1	
D-6	DSC-CA000800		Screw(15/64" N = 28)	상축부싱 고정나사(4515)	1	
D-7	DCL-AA006400		Thrust Collar	상축카라(14.72×22×8.5)(C)	1	
D-8	DSC-CA000500		Screw(1/4" N = 40)	홈볼이 멈춤나사(SC15)	2	
D-9	DBS-DA032100		Bushing For E-1(Rear)	수평밀대 후부싱	1	
D-10	DSC-CA000800		Screw(15/64" N = 28)	상축부싱 고정나사(4515)	1	
D-11	CLF-CB002300		Feed Rocker Ass'Y	톱니받침크랭크	1	
D-12	DSC-BJ005100		Screw(3/16" N = 28)	톱니받침크랭크웬나사	1	
D-13	CLF-KC002100		Feed Bar Shaft	톱니받침축	1	
D-14	PSR-AC000200		E-Ring (Φ5)	이링	1	
D-15	DSC-BF003600		Screw (11/64" N = 40)	와이롯드보강판나사(4522)	2	
D-16	CLF-BA000400		Feed Bar	톱니받침(C)	1	
D-17	CGA-GB001500		Feed Dog	톱니A-132(P=2.1)	1	
D-18	DSC-BF001800		Screw(1/8" N = 44)	톱니웬나사(4122)	2	
D-19	CLF-CB002500		Feed Rocker Shaft Crank	수평밀대크랭크(C)	1	
D-20	DSC-BA001300		Screw (1/4" N = 24, L = 17)	요동크랭크웬나사(4118)	1	
D-21	DPN-AD008000		Connecting Pin For E-37	와이롯드연결핀	1	
D-22	DSC-BF000400		Screw (15/64" N = 28)	톱니받침축 고정나사(4522)	1	
D-23	CLF-KZ000900		Feed Lifting Shaft	들대	1	
D-24	DSC-CA003600		Screw(3/8" N = 28)	들대 지지나사	2	
D-25	DSN-AA003600		Nut For D-23	들대 지지나사 고정 너트	2	
D-26	CLF-CB002400		Fee Lifting Shaft Front Crank	들대크랭크(전)(C)	1	
D-27	DSC-BF001100		Screw(3/16" N = 28)	들대(전) 고정나사(4122)	1	
D-28	CLF-KC001000		Slide Block For E-16	톱니받침블럭축	1	
D-29	CLF-CD001000		Sliding Block	톱니받침블럭(C)	1	
D-30	DSC-BA001000		Screw(11/64" N = 40)	인봉카라웬나사4-15 (4118)	1	
D-31	DSC-FA015200		Connection Screw For E-33	피이드조절기 연결단나사	1	
D-32	DSN-AA002200		Nut (9/32" N = 28)	피이드조절기 연결나사너트(4000)	1	
D-33	CLF-CC000200		Crank Rod	크랭크로드(C)	1	
D-34	CLF-DC001200		Feed Cam	피이드캠	1	
D-35	DSC-CA003500		Screw(15/64" N = 28)	피이드캠 고정나사(4515)	1	
D-36	DSR-AA000100		Stopper C-Ring	크랭크로트드 스톱퍼링(2 0 D)	1	
D-37	CLF-CC000900		Y-Rod	와이롯드	1	
D-38	CLF-BN000100		Connection Ring For Y-Rod	와이롯드 연결링(C)	1	
D-39	CFA-CA001100		Feed Link	피이드링크(C)	1	
D-40	DSC-FA015200		Connection Screw For E-43	피이드조절기 연결단나사	1	
D-41	DSN-AA002200		Nut (9/32" N = 28)	피이드조절기 연결나사너트(4000)	1	
D-42	CFA-KH000100		Connection Shaft For E-43	피이드링크 연결축	1	
D-43	CFA-DF000600		Feed Regulator	피이드조절기	1	
D-44	DSC-BF000400		Screw (15/64" N = 28)	톱니받침축 고정나사(4522)	1	
D-45	DSC-BJ003800		Screw(15/64" N = 28)	역진레버크랭크웬나사(4422)	1	
D-46	DSC-BF000700		Screw(15/64" N = 28)	베이스고정나사B (4122)	1	
D-47	DBS-DA017800		Bushing	피이드조절축부싱(C)	1	
D-48	DSC-CA000800		Screw(15/64" N = 28)	상축부싱 고정나사(4515)	1	
D-49	CFA-KC001000		Feed Regulator Shaft	피이드조절축(C)	1	
D-50	CFA-KJ001400		Stitch Length Adjusting Screw	피이드조절다이얼축	1	
D-51	PPK-BA001600		O-Ring For E-50	다이얼축오링	1	
D-52	DPN-AA008600		Feed Regulator Dial Pin	다이얼핀	1	
D-53	DSP-AA002800		Feed Regulator Dial Spring	다이얼스프링	1	
D-54	CFA-CQ000900		Stitch Length Adjusting Dial	다이얼문자지시판	1	
D-55	DSC-BF001900		Screw(3/16" N = 28)	다이얼판 고정나사(4122)	1	
D-56	AFA-PS000300		Feed Regulator Arm	역진레버크랭크(조)	1	
D-57	DSC-BA000400		Screw(3/16" N = 28)	수평밀대크랭크웬나사(4118)	1	
D-58	DSC-BF003100		Screw (11/64" N = 40)	가마잡이 나사(국산) (4122)	1	
D-59	CFA-KF000800		Feed Lever Shaft	역진레버축	1	
D-60	PPK-BA000700		Feed Lever Shaft O-Ring	역진레버축 O-링	1	
D-61	DWS-CB000200		Corrugated Washer For E-59	레버와셔	1	
D-62	CFA-CM001200		Reverse Feed Control Lever	역진레버(도장품)	1	
D-63	DSC-BA001400		Screw (3/16" N = 32)	역진레버 고정나사(4118)	1	
D-64	DSC-BJ002400		Screw (3/16" N = 32)	레버덜개나사(4124)	1	
D-65	CFA-BB001100		Tension Spring Suspension Plate	역진레버축스프링걸이	1	
D-66	DSC-BF001100		Screw(3/16" N = 28)	들대크랭크(전) 고정나사(4122)	1	
D-67	DSP-AB003500		Spring For E-62	레버스프링	1	

Presser Bar & Knee Lifting Mechanism

누름대 및 무릎올림관계



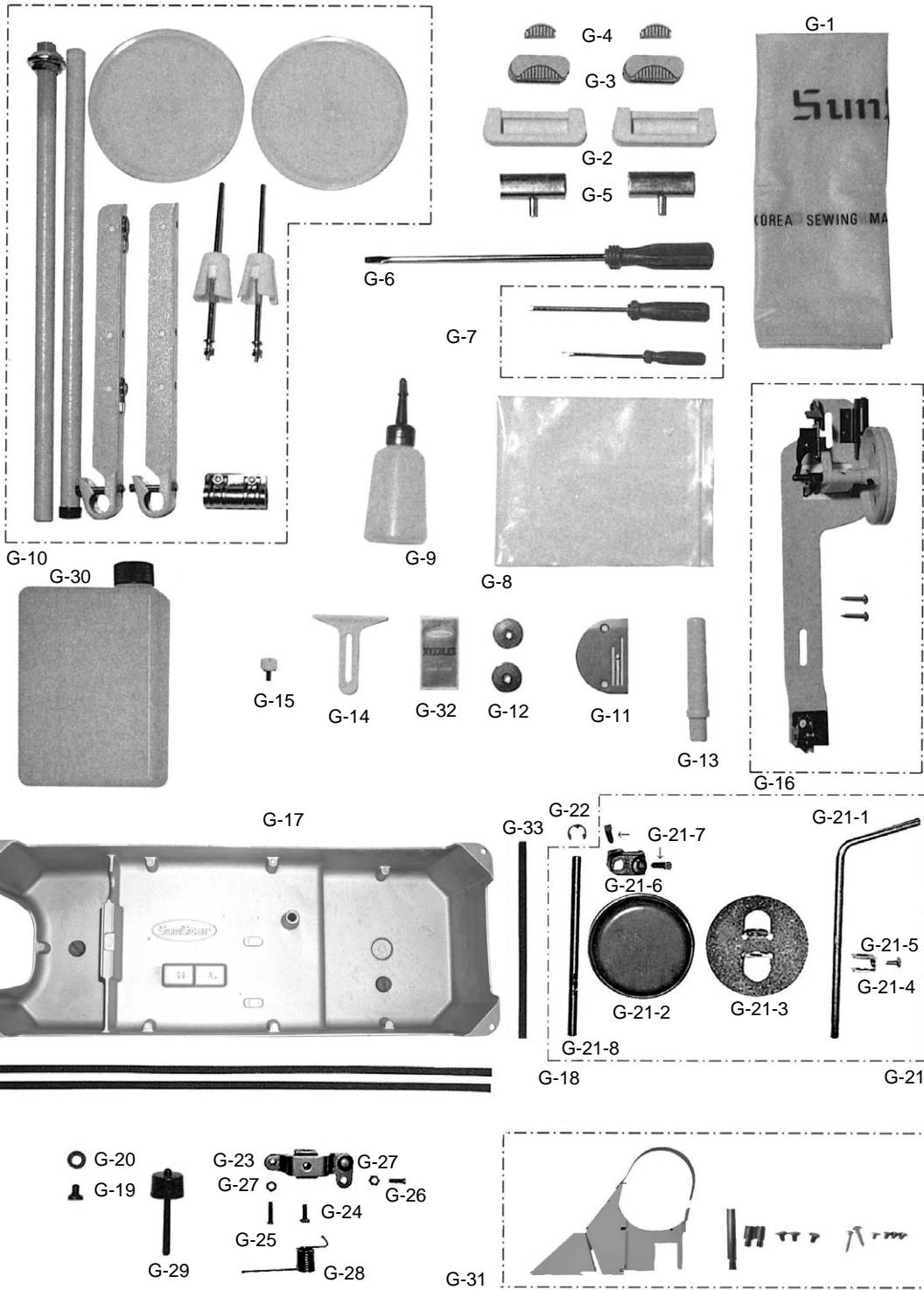
Ref. No.	Parts No.	Note	Name of Parts	품명	Q'ty	Applied Period
E-1	CPB-CR000200		Presser Bar	누름대(C)	1	
E-2	CGA-GC002200		Sub-Presser Foot	보조노루발	1	
E-3	CPB-BH000800		Needle Safety Wire	바늘보호와이어	1	
E-4	DSC-BA001700		Screw(11/64" N = 40)	홈붙이냄비작은나사(SC18)	1	
E-5	DBS-DA018200		Presser Bar Bushing	누름대붓싱©	1	
E-6	DSC-CA002400		Screw(11/64" N = 40)	바늘대붓싱나사(4515)	1	
E-7	CPB-BF000900		Bracket For Presser Bar Lifter	누름대올리기브라켓(K3463)	1	
E-8	DSC-CA000500		Screw(1/4" N = 40)	홈붙이멈춤나사(SC15)	1	
E-9	DSC-FG001200		Guide Shaft For F-8	누름대올리기브라켓안내축	1	
E-10	DSN-AA001300		Nut (1/4" N = 40)	슬라이드블럭나사너트(4000)	1	
E-11	CPB-CL000400		Roller For F-8	누름대올리기브라켓롤러	1	
E-12	CPB-BK000300		Guide Shaft For F-8	누름대올리기브라켓안내	1	
E-13	PPN-AF002200		Lock Pin For F-13	브라켓안내로크핀 3 × 3 2	2	
E-14	DSC-BA001100		Screw(11/64" N = 40)	윗뚜껑칩나사(좌) (4118)	2	
E-15	DSP-AA007700		Presser Spring	압력조절스프링	1	
E-16	DSC-HA000500		Screw(9/16" N = 20)	압력조절나사(4322)	1	
E-17	DSN-CC000600		Nut (9/16" N = 20)	압력조절나사너트(4000)	1	
E-18	CPB-CM000600		Presser Bar Lifter	누름대올리기	1	
E-19	DPN-AD007900		Hinge Pin For F-19	누름대올리기핀	1	
E-20	DSC-CA000600		Screw(11/64" N = 40)	곡봉실결이나사(4515)	1	
E-21	PPN-AF002300		Stopper For F-19	누름대올리기스토퍼3×20	1	
E-22	APM-PS001800		Knee Lifting Lever Ass`Y	무릎올림레버(조)	1	
E-22-1	CPM-CM002700		Knee Lifting Lever	무릎올림레버	1	
E-22-2	DBS-DB010900		Knee Lifting Lever Bushing	무릎올림레버붓싱	1	
E-23	DSC-FD001400		Hinge Screw For F-23	무릎올림레버단나사	1	
E-24	CLP-BJ001600		Tension Release Plate	실늑추기판	1	
E-25	DSC-FA007300		Hinge Screw For F-25	연결링크단나사	1	
E-26	CUF-BN000100		Support Ring For F-25	노루발운동레버지지판링	1	
E-27	CTR-LB000200		Tension Release Plate Cover	실늑추기판커버	1	
E-28	DSC-BJ000200		Screw(11/64" N = 40)	톱커버힌지고정나사(4525)	2	
E-29	DPN-AA011100		Tension Release Pin	실늑추기핀	1	
E-30	CPM-BF000100		Connection Holder	무릎올림봉잡이	1	
E-31	DSC-FD002000		Hinge Screw For F-31	무릎올림봉단나사	1	
E-32	CPM-CR000600		Knee Lifter Pull Rod	무릎올림봉	1	
E-33	CPM-JL000100		Felt Washer For F-33	무릎올림봉헬트	1	
E-34	DSN-AA000800		Nut (3/16" N = 28)	제어체운동나사너트(4000)	1	
E-35	DSC-BJ000400		Screw (11/64" N = 40)	윗뚜껑칩나사(4125)	2	
E-36	APM-PS001900		Knee Lifting Link Ass`Y	무릎올림링크(조)	1	
E-36-1	CPM-BB002000		Knee Lifting Link Stopper	무릎올림링크반침	1	
E-36-2	CPM-CA002400		Knee Lifting Link	무릎올림링크	1	
E-36-3	DPN-AA017600		Knee Lifting Link Adjust Pin	무릎올림링크조정핀	1	



Ref. No.	Parts No.	Note	Name of Parts	품 명	Q' ty	Applied Period
F-1	CLB-JJ000400		Oil Gauge Window	유창	1	
F-2	PPK-BB000100		O-Ring For G-1	O-링	1	
F-3	CLB-JG000300		Oil Return Tube(Φ3)	환류파이프	1	
F-4	CLB-JL007100		Oil Return Felter	환류펠트	1	
F-5	CLB-BH000300		Oil Return Felter Holder	환류펠트잡이	1	
F-6	AS-002995-02		Oil Pump Ass`Y	오일펌프(조)	1Set	
F-6-1	CLB-JC000200		Oil Pump Body	오일펌프몸체	1	
F-6-2	CLB-JP000500		Nipple For Oil Return Tube	환류호스니플	1	
F-6-3	CLB-JP000600		Nipple For Lower Shaft Oil Supply	하측급유니플	1	
F-6-4	CLB-BR000100		Impeller	임펠러	1	
F-6-5	CLB-CN000200		Piston	피스톤	1	
F-6-6	DSP-AA002700		Piston Spring	피스톤스프링	1	
F-6-7	PPN-AF000900		Piston Spring Pin	피스톤스프링핀	1	
F-6-8	DSC-BF007400		Piston Spring Pin Screw	피스톤스프링핀나사	1	
F-6-9	CLB-LB000100		Oil Pump Cover	오일펌프커버	1	
F-6-10	CLB-JM000400		Oil Pump Cap	오일펌프캡	1	
F-6-11	CLB-BG002100		Magnetic Holder	자석잡이	1	
F-6-12	SC-120S-1230		Screw(9/64" N = 40)	오일펌프커버나사	4	
F-6-13	DCL-AA001700		Collar For Impeller Shaft	오일펌프카라	1	
F-6-14	DSC-CA000400		Screw(11/64" N = 40)	오일펌프조인트나사	2	
F-7	DSC-BJ000300		Screw(9/64" N = 40)	톱커버나사(우)	3	
F-8	PWS-CA000200		Oil Pump Body Washer	오일펌프몸체와셔	3	
F-9	DSP-AC002300		Oil Pump Connecting Spring	오일펌프연결스프링	1	
F-10	DCL-AA002600		Oil Pump Connecting Collar	오일펌프조인트카라	1	
F-11	DSC-CA001600		Screw(11/64" N = 40)	실닛추기 고정나사	2	
F-12	CLB-JG000300		Oil Return Tube(Φ3)	실체기급유파이프	1	
F-13	CLB-JD000300		Oil Wick	실체기급유유심	1	
F-14	CLB-JD000300		Oil Wick	노루발운동링크급유유심	1	
F-15	CLB-JD000300		Oil Wick	바늘대급유유심	1	
F-16	CLB-BH000400		Oil Wick Holder For G-12	펠트잡이스프링	2	
F-17	DSC-BA000900		Screw(9/64" N = 40)	면판측면커버나사(하) (4118)	1	
F-18	CLB-BB002500		Oil Pump Bracket	오일펌프브라켓	1	
F-19	DSC-BA000700		Screw(3/16" N = 32)	오일펌프브라켓고정나사	3	
F-20	CLB-BB002600		Oil Receiver Bracket	오일받이브라켓	1	
F-21	DSC-BF005400		Screw(M4×P0.7)	오일받이브라켓고정나사	4	
F-22	CLB-JQ000100		Upper Shaft Oil Nozzle	상측급유노즐	1	
F-23	CLB-JP000200		Oil Hose Joint B	오일호스조인트B	1	
F-24	PSN-AA000600		Upper Shaft Oil Pipe Nut	상측오일파이프너트	1	
F-25	CLB-JG000200		Oil Hose(Φ5)	오일호스조인트B급유호스	1	
F-26	CLB-BH001200		Oil Hose Holder(M)	오일호스잡이(중)	1	
F-27	ALB-PS002800		Upper Shaft Oil Pipe Ass`Y	상측급유파이프(조)	1Set	
F-27-1	CLB-JF002600		Upper Shaft Oil Pipe	상측급유파이프	1	
F-27-2	CLB-JP004000		Upper Shaft Oil Pipe Nipple	상측급유파이프니플	1	
F-27-3	DSC-AA003800		Upper Shaft Oil Pip Screw(7/16" N = 28)	상측급유파이프고정나사	1	
F-28	CLB-BH001200		Oil Hose Holder(M)	오일호스잡이(중)	1	
F-29	CLB-BQ000500		Lower Shaft Oil Supply Pipe	하측급유파이프	1	
F-30	CLB-JD000300		Oil Wick	들대급유유심	1	



Accessories 액세서리관계



Ref. No.	Parts No.	Note	Name of Parts	품명	Q'ty	Applied Period
G-1	CAC-MA000500		Sewing Machine Cover	미싱커버(대)	1	
G-2	CST-FF000400		Hinge Sheet Rubber	힌지고무(대)	2	
G-3	CST-FD001100		Rubber Base For Bed(A)	힌지고무(중)	2	
G-4	CST-FD001200		Rubber Base For Bed(B)	힌지고무(소)	2	
G-5	CST-BB002500		Head Hinge	힌지	2	
G-6	PTL-BA000100		Driver (Large)	드라이버(대)	1	
G-7	PTL-BA000200		Driver (Middle & Small)	드라이버(중,소)	1	
G-8	CAC-MH000100		Accessory Box	악세서리박스	1	
G-9	CAC-JB000100		Oil Tank	유차	1	
G-10	CST-MF000100		Spod Holder Assembly	실패꽃이(조)	1	
G-11	CGA-GA001500		Needle Plate	바늘판	1	
G-12	CHK-HB000700		Bobbin	보빈	4	
G-13	CST-CR000400		Head Rest	미싱받침대	1	
G-14	CMB-BJ008000		Attachment	정규(STEEL)	1	
G-15	DSC-BG000300		Screw(9/64" N = 40)	정규쥘나사(4124)	1	
G-16	AAC-PS000100		Bobbin Winder Assembly	실감기(조) - 소	1	
G-17	CST-JA003100		Oil Pan	오일팬	1	
G-18	CAC-MG000300		Oil Pan Gasket	오일팬가스켓	1	
G-19	DSC-BF006100		Screw(M8 x 1.25)	배유구멍마개나사	2	
G-20	CST-FB000200		Packing For H-19	배유구멍마개나사오링	2	
G-21	AS-002107-00		Knee Lifter Ass' Y	무릎받침(조)	1Set	
G-21-1	CST-KC001700		Knee Lifter Shaft	무릎받침축	1	
G-21-2	CST-FZ000100		Knee Lifter Pad	무릎받침고무	1	
G-21-3	CST-BJ000400		Knee Lifter Pad Insert Plate	무릎받침고무삽입판	1	
G-21-4	CST-CA000200		Holder For H-21-2	무릎받침고무연결링크	1	
G-21-5	DSC-AA002700		Set Screw For H-21-4	무릎받침연결링크쥘나사	1	
G-21-6	CST-CB000300		Knee Lifter Arm Joint Complete	무릎받침연결크랭크	1	
G-21-7	DSC-CC000100		Screw(5/16" N = 18)	무릎받침축고정나사	2	
G-21-8	CST-KC001200		Knee Lifting Controller Shaft	제어체축	1	
G-22	PSR-AC000100		E-Ring(φ9)	제어체축링	1	
G-23	CST-BB002900		Knee Lifting Controller	제어체	1	
G-24	DSC-AA000300		Screw(15/64" N = 28)	포크쥘나사(육각)	1	
G-25	DSC-BA002700		Screw(15/64" N = 28)	제어체운동조절나사(중)	1	
G-26	DSC-BA002800		Screw(15/64" N = 28)	제어체운동조절나사(대)	1	
G-27	DSN-AA000400		Nut(15/64" N = 28)	수평운동조절축너트	2	
G-28	DSP-AC005600		Spring For H-23	제어체스프링	1	
G-29	CST-CR000900		Knee Base Rubber	무릎올림봉 받침 캡	1	
G-30	CAC-JB000200		Oil Can(With Oil)	오일캔(특종용)	1	
G-31	60-101A-3400		Belt Cover Ass' Y	벨트커버(조)	1	
G-32			Needle	바늘	1Set	

