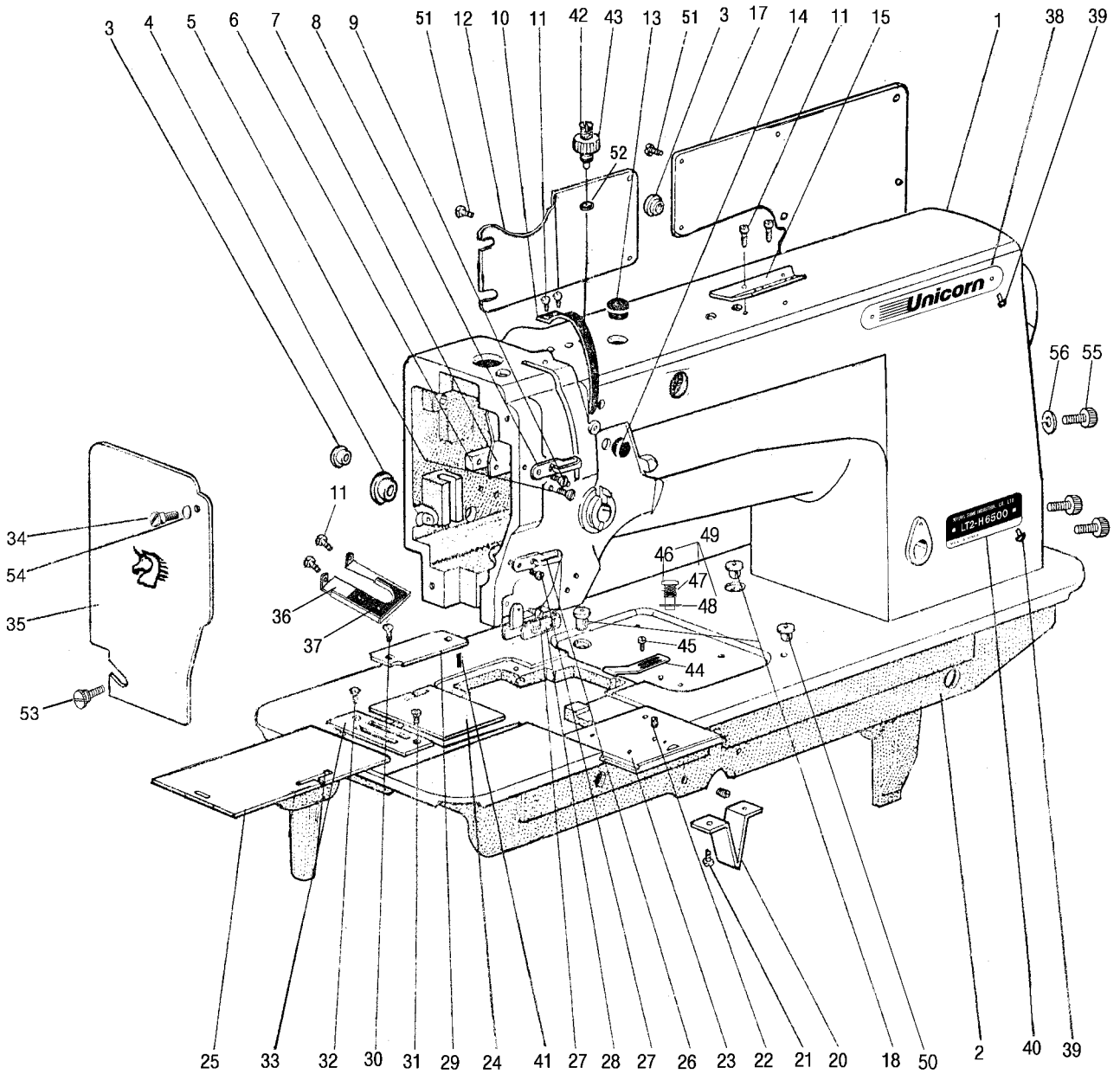


LT2- H650

H6500

A. 본체관계 / Arm Bed & It's Accessories	1
B. 사조자 기구 / Thread Tension Regulator Mechanism	3
C. 상축 기구 / Upper Shaft Mechanism	5
D. 압봉올림 기구 / Presser Bar Mechanism	7
E. 천평, 침봉 요동 기구 / Thread Take-up & Needle Bar Rock Motion Mechanism ..	9
F. 송조절기 기구 / Feed Regulator Mechanism	11
G. 하축 기구 / Lower Shaft Mechanism	13
H. 가마대 기구 / Hook Saddle Mechanism(1)	15
K. 사절 기구(1) / Thread Trimmer Mechanism(1)	17
K. 사절 기구(2) / Thread Trimmer Mechanism(2)	19
L. 위치검출기, 조작상자 기구 / Synchronizer, Operation Panel Mechanism	21
M. 급유 기구 / Oil Lubrication Mechanism	23
N. 유수판 기구 / Oil Pan Mechanism	25
Z. 부속품 / Accessories	26
게이지 / Gauge Parts	28

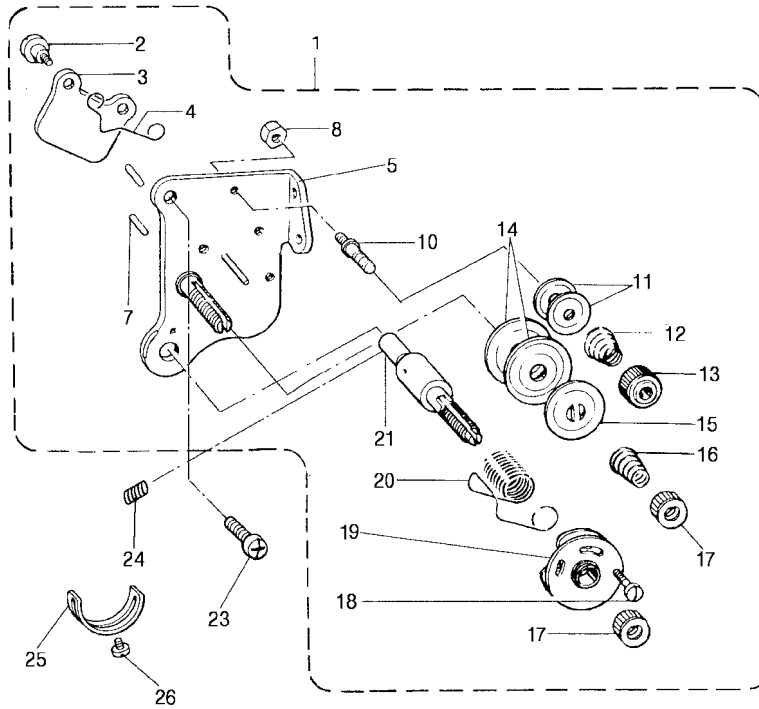


A. 본체 기구 / Arm Bed & It's Accessories

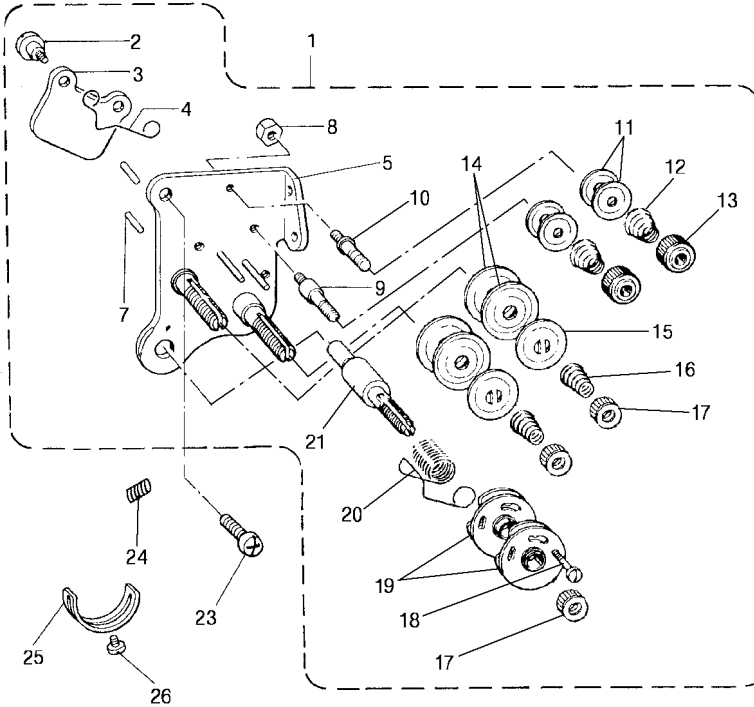
H650, H6500

No.	Code No.	품 명	Parts of Name	Qty				
				H650-1	H650-2	H6500-1	H6500-2	
1	161001	아암	Arm	1	1			
	161032					1	1	
2	151048	베드	Bed			1	1	
	161071					1	1	
3	117007	고무마개 8.8	Rubber Plug 8.8	3	3	3	3	
4	117004	고무마개 19	Rubber Plug 19	1	1	1	1	
5	4021	3/16(28)-13 나사	Screw 3/16(28)-13	1	1	1	1	
6	153001	스페이샤	Spacer	1	1	1	1	
7	153002	기름막이판	Oil Guard Plate	1	1	1	1	
8	153003	실안내(상)	Thread Guide	1	1	1	1	
9	4019	3/16(28)-10 접시나사	Screw 3/16(28)-10	1	1	1	1	
10	153005	실채기카바	Thread Take-up Cover	1	1	1	1	
11	1137	11/64(40)-8 나사	Screw 11/64(40)-8	6	6	6	6	
12	163001	측판카바(A)	Side Cover (A)	1	1	1	1	
13	157002	고무마개 13	Rubber Plug 13	2	2	2	2	
14	157016	고무마개 13	Rubber Plug 13	1	1	1	1	
15	153007	상개실안내	Thread Guide	1	1	1	1	
17	153008	측판카바(B)	Side Cover (B)	1	1	1	1	
18	157003	기름캡	Oil Cap	2	2	2	2	
20	153009	지지대	Supporter			1	1	
21	2079	1/4(24)-16 나사	Screw 1/4(24)-16			2	2	
22	3032	15/64(28)-4.5 나사	Screw 15/64(28)-4.5	1	1	1	1	
	153010			1	1			
23	153082	미끄럼판(전)	Slide Plate (F)			1	1	
	153071			1	1			
24	153083	미끄럼판(우)	Slide Plate (R)			1	1	
	153072			1	1			
25	153084	미끄럼판(좌)	Slide Plate (L)			1	1	
	153011			1	1			
26	153011	실안내(중)	Thread Guide (M)	1	1	1	1	
27	4013	9/64(40)-7.1 나사	Screw 9/64(40)-7.1	2	2	2	2	
28	159001	실안내(하)(조)	Thread Guide (L) ASM	1	1	1	1	
29	153014	카바	Cover	1	1	1	1	
30	4026	11/64(40)-5.4	Screw 11/64(40)-5.4	2	2	2	2	
31	4025	침판나사 11/64(40)-10	Screw 11/64(40)-10	1	1	1	1	
32	2029	9/64(40)-6.5 나사	Screw 9/64(40)-6.5	1	1	1	1	
33	*	침판	Needle Plate	1	1	1	1	
34	6011	9/64(40)-7 나사	Screw 9/64(40)-7	1	1	1	1	
35	153015	면판	Face Plate	1	1	1	1	
36	263019	기름막이판	Oil Guard Plate	1	1	1	1	
37	158013	펠트	Felt	1	1	1	1	
38	114009	명판	Name Plate	1	1	1	1	
39	114011	핀	Pin	4	4	4	4	
	164001			1				
40	164002	형식판	Model Plate		1			
	164003					1		
	164004					1		
41	152074	침판안내핀	Needle Plate Guide Pin	1	1	1	1	
42	8101	기름조절 나사	Adjusting Screw	1	1	1	1	
43	152075	너트	Nut	1	1	1	1	
44	153183	미끄럼판 스톱퍼	Stopper	1	1	1	1	
45	2124	11/64(40)-6.5 나사	Screw 11/64(40)-6.5	2				
46	262012	푸시버튼	Push Bitton	1	1	1	1	
47	265002	스프링	Spring	1	1	1	1	
48	266001	스톱핀	Stop Pin	1	1	1	1	
49	169016	복귀장치(조)	Return Installation	1	1	1	1	
50	117006	고무마개 11.8	Rubber Plug 11.8	1	1	1	1	
51	1126	11/64(40)-10 나사	Screw 11/64(40)-10	12	12	12	12	
52	177003	기름조절 고무	Adjusting Rubber	1	1	1	1	
53	6014	9/64(40)-8 나사	Screw 9/64(40)-8 나사	1	1	1	1	
54	263022	와셔	Washer	1	1	1	1	
55	9035	나사 1/4(24)-16	Screw 1/4(24)-16	3	3	3	3	
56	153041	와셔	Washer	1	1	1	1	

H650-1, H6500-1



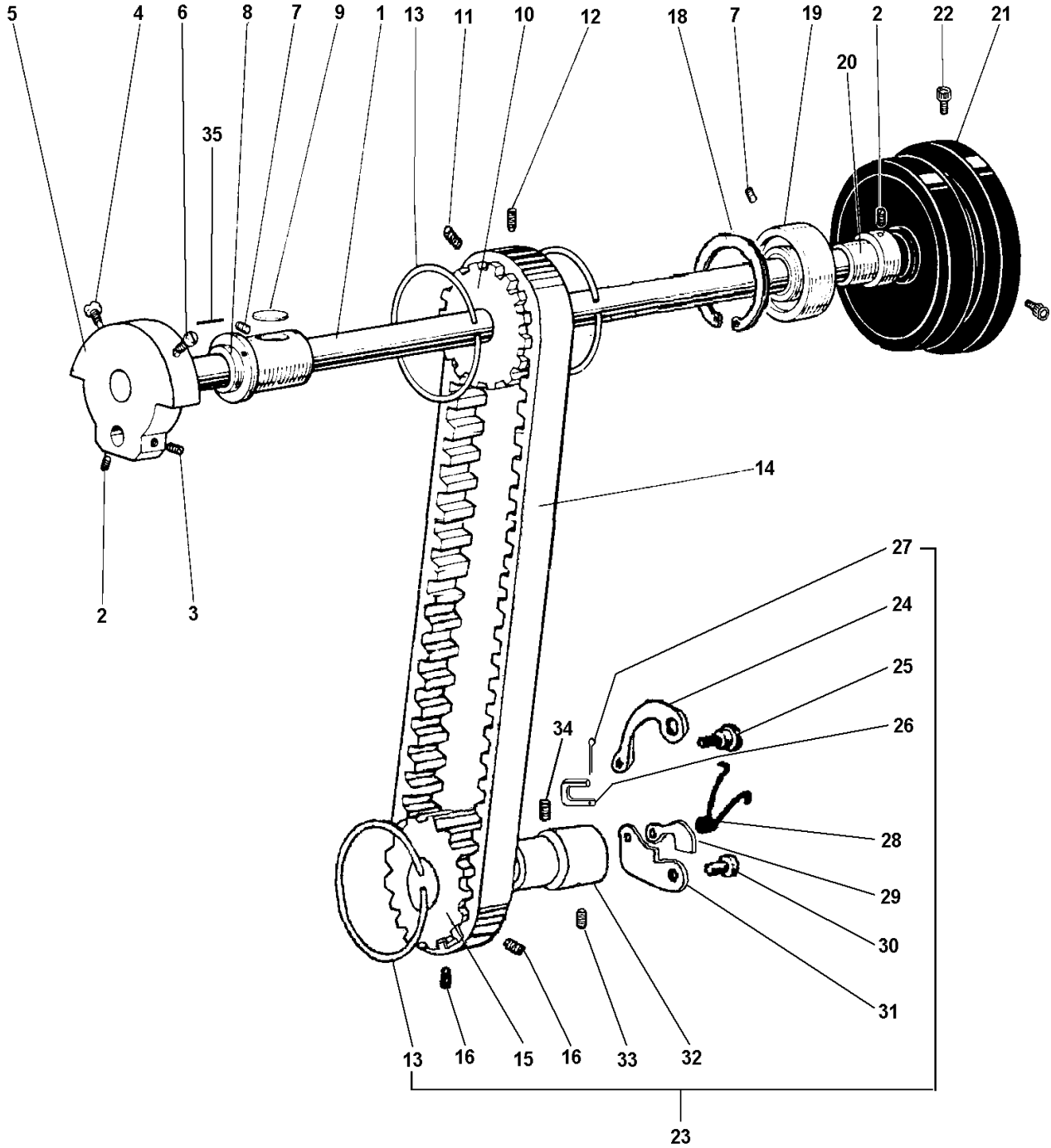
H650-2, H6500-2



B. 시조자 기구 / Thread Tension Regulator Mechanism

H650, H6500

No.	Code No.	품 명	Parts of Name	Qty			
				H650-1	H650-2	H6500-1	H6500-2
1	159002	시조자(조)	Thread tension regulator		1		1
	169009			1		1	
2	6006	SM 9/64(40)-3 단나사	Stud screw 9/64(40)-3	(2)	(2)	(2)	(2)
3	153016	실뿔추기판	Tension releasing plate	(1)	(1)	(1)	(1)
4	155001	실뿔추기스프링	Tension releasing spring	(1)	(1)	(1)	(1)
	159065				(1)		(1)
5	169027	시조자판	Mounting plate	(1)		(1)	
7	152004	핀(좌)	Pin(L)	(1)	(1)	(1)	(1)
8	122084	너트	Nut	(1)	(2)	(1)	(2)
9	152001	시조자(소)	Pin	(1)	(1)	(1)	(1)
10	152002	실안내핀(소)	Thread guide pin		(1)		(1)
11	153019	시조자접시(소)	Thread tension disc(S)	(2)	(4)	(2)	(4)
12	155002	스프링	Spring	(1)	(2)	(1)	(2)
13	152007	너트	Nut	(1)	(2)	(1)	(2)
14	153018	시조자접시(대)	Thread tension disc(L)	(2)	(4)	(2)	(4)
15	153020	스프링안내판	Spring guide plate	(1)	(2)	(1)	(2)
16	135002	스프링	Spring	(1)	(2)	(1)	(2)
17	152008	너트	Nut	(2)	(3)	(2)	(3)
18	2004	3/32(56)-12 나사	Screw 3/32(56)-12		(1)		(1)
	2126	3/32(56)-7 나사	Screw 3/32(56)-7	(1)		(1)	
19	159018	실채기 스프링안내(조)	Plate complete. ASM	(1)	(2)	(1)	(2)
20	155004	실채기 스프링	Thread take-up spring	(1)	(1)	(1)	(1)
21	152005	스티드나사	Thread tension stud	(1)	(1)	(1)	(1)
23	1050	11/64(40)-8 나사	Screw 11/64(40)-8	1	1	1	1
24	3019	11/64(40)-6 나사	Screw 11/64(40)-6	1	1	1	1
25	153074	스프링스톱퍼	Stopper	1	1	1	1
26	1020	9/64(40)-5 나사	Screw 9/64(40)-5	1	1	1	1



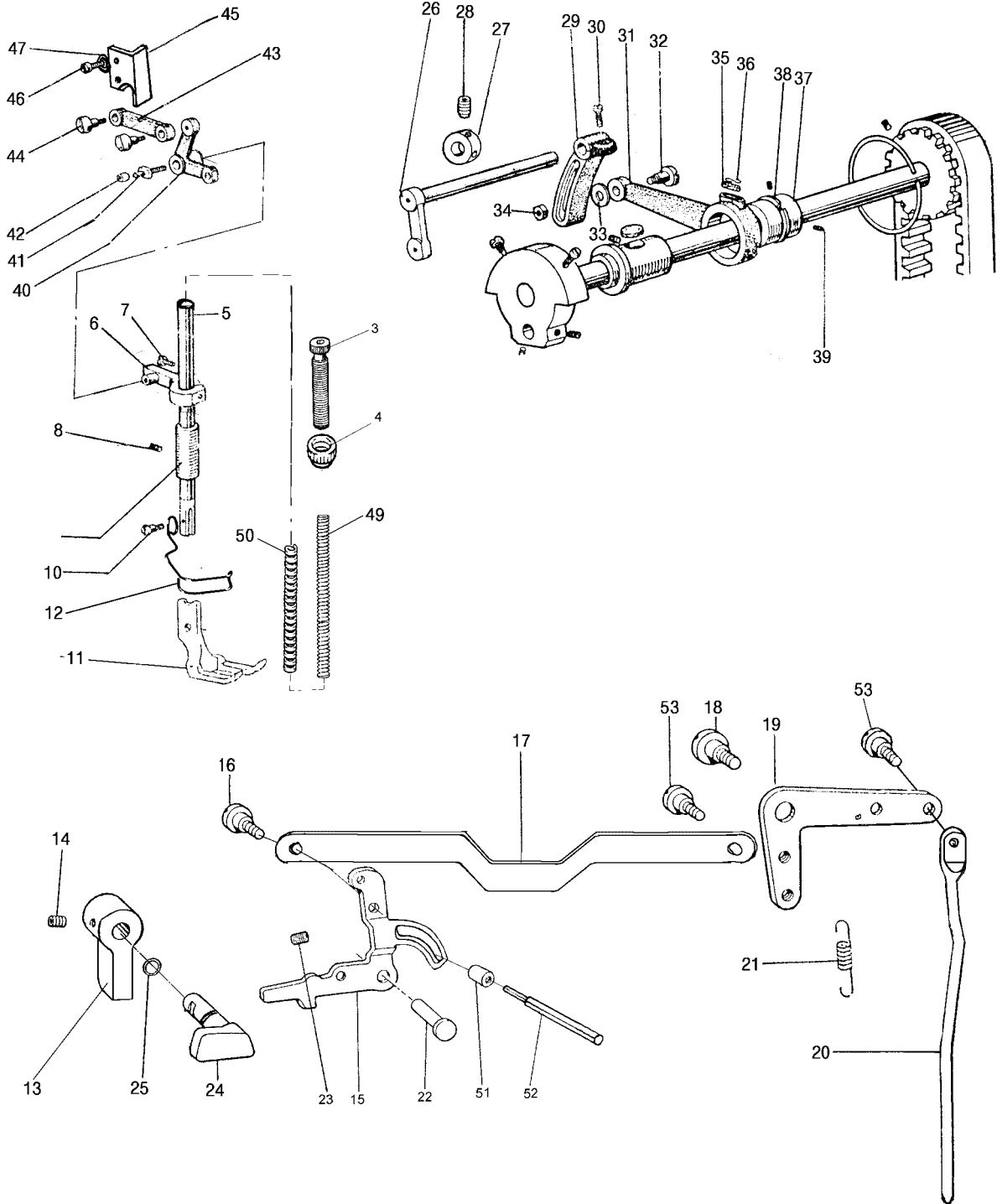
C. 상축 기구 / Upper Shaft Mechanism

H650, H6500

No.	Code No.	품 명	Parts of Name	Q'ty			
				H650-1	H652-2	H6500-1	H6500-2
1	152010	상축	Upper Shaft	1	1	1	1
2	3055	1/4(40)-5 나사	Screw 1/4(40)-5	3	3	3	3
3	3061	1/4(40)-7 나사	Screw 1/4(40)-7	1	1	1	1
4	2087	9/32(28)-13 나사	Screw 9/32(28)-13	1	1	1	1
5	151003-H	조합크랭크	Thread Take-up Crank	1	1	1	1
6	7004	9/32(28)-12 나사	Screw 9/32(28)-12	1	1	1	1
7	3039	15/64(28)-10 나사	Screw 15/64(28)-10	2	2	2	2
8	152011	상축붓상(좌)	Upper Shaft Bushing (L)	1	1	1	1
9	158002	펠트	Felt	1	1	1	1
10	152012	타이밍풀리(상)	Timing Pulley (U)	1	1	1	1
11	3066	1/4(40)-12 나사	Screw 1/4(40)-12	1	1	1	1
12	3065	1/4(40)-10 나사	Screw 1/4(40)-10	1	1	1	1
13	155005	스프링플랜지	Spring Flange	(3)	(3)	(3)	(3)
14	156009	타이밍벨트	Timing Belt	1	1	1	1
15	159037	타이밍풀리(하)	Timing Pulley (L)	1	1	1	1
16	3032	15/64(28)-4 나사	Screw 15/64(28)-4	2	2	2	2
18	155006	멈춤링	Stop Ring	1	1	1	1
19	156001	볼베어링	Ball Bearing	1	1	1	1
20	152013	상축붓상(우)	Upper Shaft Bushing (R)	1	1	1	1
21	134004	풀리	Pulley	1	1		
	134005					1	1
22	9041	15/64(28)-14 나사	Screw 15/64(28)-14	2	2	2	2
23	159036	안전장치(조)	Safe Clutch ASSY.	1	1	1	1
24	153160	판스프링	Plate Spring	1	1	1	1
25	152101	핀	Pin	1	1	1	1
26	151115	클러치링크	Clutch Link	1	1	1	1
27	146003	분할핀	Split Pin	1	1	1	1
28	155032	스프링	Spring	1	1	1	1
29	153162	안전장치(B)	Safe Clutch(B)	1	1	1	1
30	152100	핀	Pin	1	1	1	1
31	153161	안전장치(A)	Safe Clutch(A)	1	1	1	1
32	152099	부싱	Bushing	1	1	1	1
33	3109	1/4(40)-10 나사	Screw 1/4(40)-10	1	1	1	1
34	3058	1/4(40)-6 나사	Screw 1/4(40)-6	1	1	1	1
35	158027	기름심지	Oil Wick	1	1	1	1

D. 압봉올림 기구 / Presser Bar Lifter Mechanism

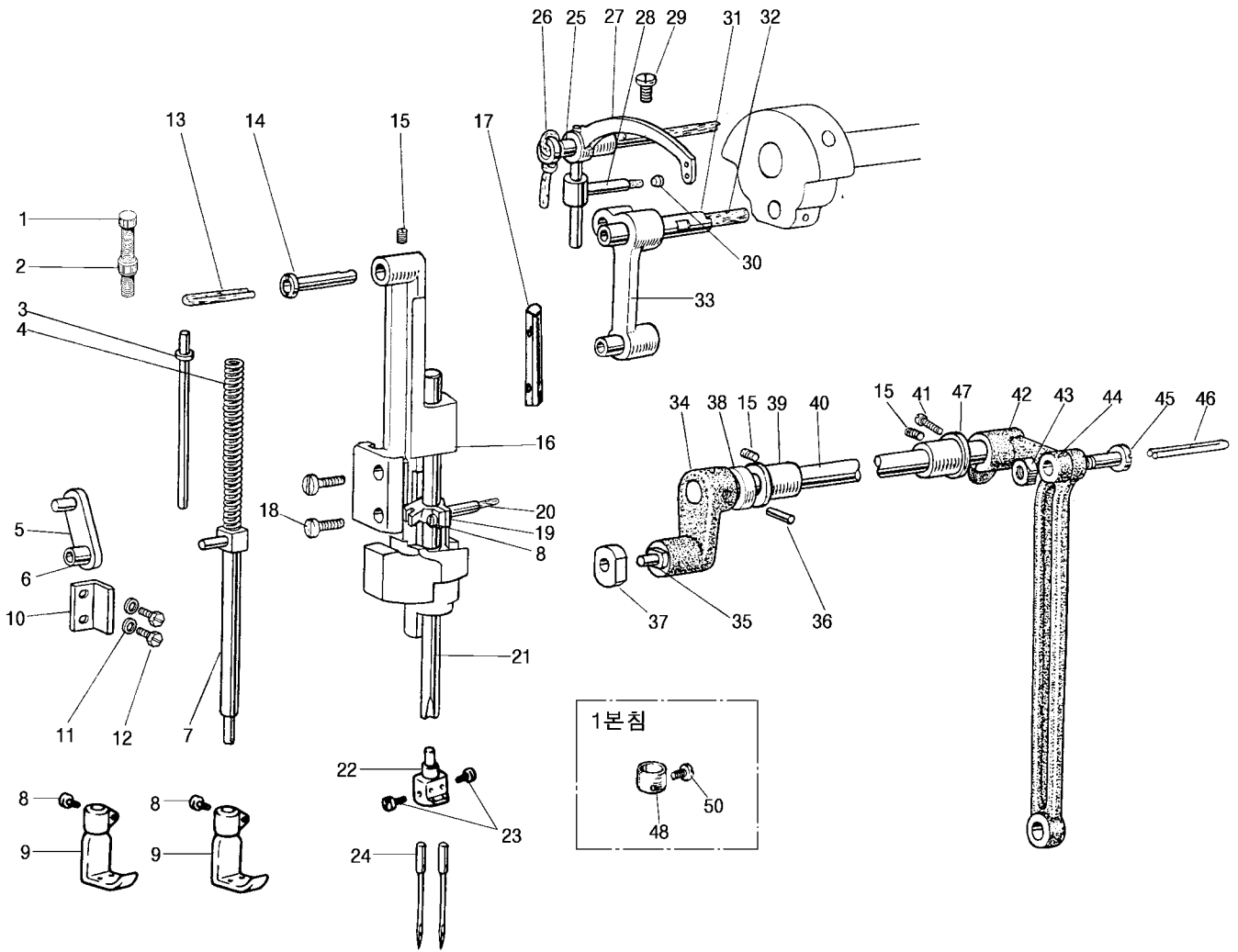
H650, H6500



D. 압봉올림 기구 / Presser Bar Lifter Mechanism

H650, H6500

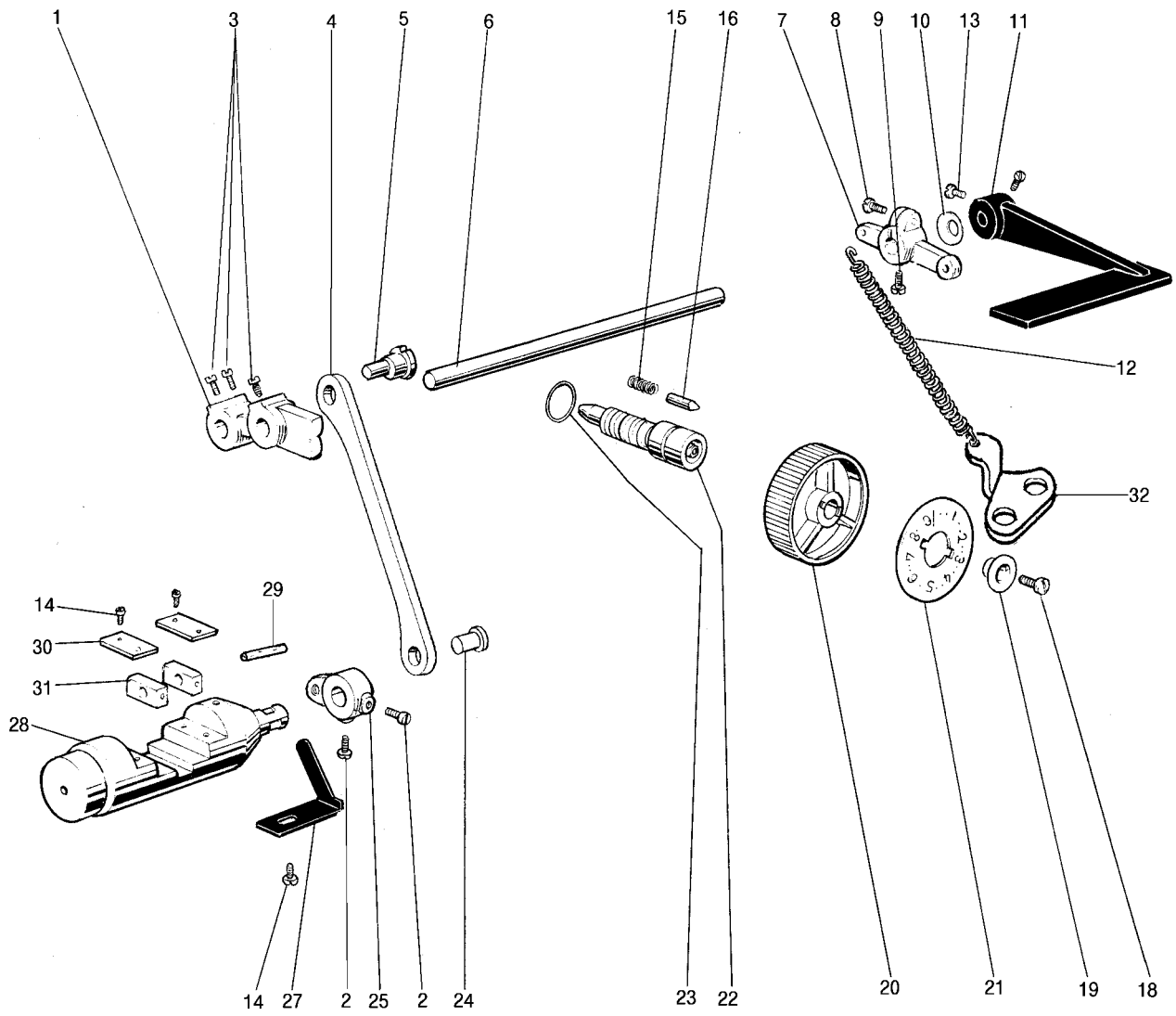
No.	Code No.	품 명	Parts of Name	Q'ty			
				H650-1	H650-2	H6500-1	H6500-2
3	159066-H	압봉절나사(조)	Thumb Screw(ASM)	1	1	1	1
4	132067	너트 1/2(28)	Nut 1/2(28)	1	1	1	1
5	162020	압봉	Presser Bar	1	1	1	1
6	169003	압봉대안내 브라켓트	Presser Bar Guide Bracket	1	1	1	1
7	1061	나사 11/64(40)-16	Screw 11/64(40)-16	1	1	1	1
8	3039	나사 15/64(28)-10	Screw 15/64(28)-10	1	1	1	1
9	132062	압봉붓심	Presser Bar Bushing	1	1	1	1
10	6108	노루발고정나사	Presser Foot Screw	1	1	1	1
11	*	노루발(외)	Presser Foot(Out Side)	1	1	1	1
12	165002	핑거보호대	Finger Guard	1	1	1	1
13	151120	압봉올림손잡이	Presser Bar Lifter	1	1	1	1
14	3020	나사 11/64(40)-6	Screw 11/64(40)-6	1	1	1	1
15	153022 263026	실늑추기판	Thread Releasing Plate	1	1	1	1
16	6035	단나사 3/16	Stud Screw 3/16	2	2	2	2
17	153023	무릎올림연간	Knee Lifter Rod	1	1	1	1
18	6110	나사 15/64(28)-6.7 나사	Screw 15/64(28)-6.7	1	1	1	1
19	153024	무릎올림레버	Knee Lifter Lever	1	1	1	1
20	153025	무릎올림봉	Knee Lifter Bar	1	1	1	1
21	125012	스프링	Spring	1	1	1	1
22	152016	실늑추기판핀	Pin	1	1	1	1
23	3020	나사 11/64(40)-6	Screw 11/64(40)-6	1	1	1	1
24	152017	올림캠	Presser Bar Lifting Cam	1	1	1	1
25	117019	O링 8	O Ring 8	1	1	1	1
26	161008	송올림요동축	Feed Lifter Rock Shaft	1	1	1	1
27	162016	셋트카라	Set Set Coller	1	1	1	1
28	3054	나사 1/4(40)-4	Screw 1/4(40)-4	1	1	1	1
29	161004	상부상하축레버	Lever(R)	1	1	1	1
30	9057	나사 1/4(24)-18	Screw 1/4(24)-18	1	1	1	1
31	161005	연결로드	Connecting Rod	1	1	1	1
32	6071	단나사 M6-24	Stud Screw M6-24	1	1	1	1
33	153075	와셔	Washer	1	1	1	1
34	166001	M6 U너트	U-nut M6	1	1	1	1
35	168001	펠트	Felt	1	1	1	1
36	165001	스프링	Spring	1	1	1	1
37	162001	편심캠	Eccentric Cam	1	1	1	1
38	165003	스톱링 C25	Stop Ring C25	1	1	1	1
39	3061	나사 1/4(40)-7	Screw 1/4(40)-7	3	3	3	3
40	161010	벨크랭크	Bell Crank	1	1	1	1
41	162003	스톱퍼축	Stopper Shaft	1	1	1	1
42	162004	고로	Roller	1	1	1	1
43	131026	링크	Link	1	1	1	1
44	6092	단나사	Stud Screw	2	2	2	2
45	163003	벨크랭크 안내대	Bell Crank Guide	1	1	1	1
46	1050	나사 11/64(40)-8	Screw 11/64(40)-8	2	2	2	2
47	123062	와셔	Washer	2	2	2	2
49	255001	미세조절 스프링	Minute Regulation Spring	1	1	1	1
50	135009	스프링	Spring	1	1	1	1
51	262017	롤러	Roller	1	1	1	1
52	152009 262016	실늑추기판	Thread Releasing Pin	1	1	1	1
53	6046	나사 11/64(40)-9	Screw 11/64(40)-9	2	2	2	2



E. 천평, 침봉 요동 기구 / Thread Take-up & Needle Bar Rock Motion Mechanism

H650, H6500

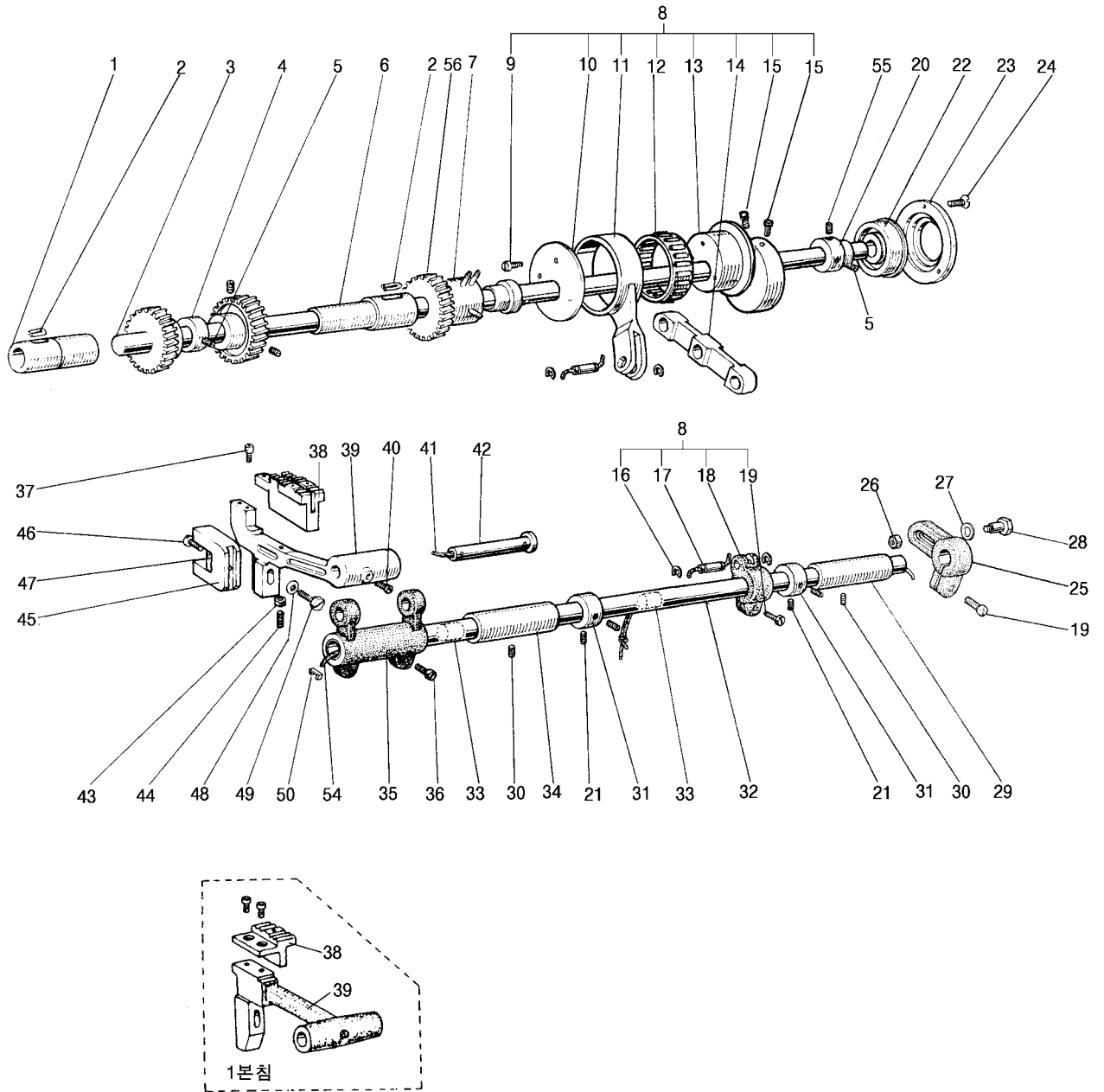
No.	Code No.	품명	Parts of Name	Q'ty			
				H650-1	H650-2	H6500-1	H6500-2
1	8111	알조절나사	Adjust Screw	1	1	1	1
2	162023	너트 5/16(28)	Nut 5/16(28)	1	1	1	1
3	162005	스프링 안내봉	Spring Guide Bar	1	1	1	1
4	135008	스프링	Spring	1	1	1	1
5	161011	링크	Link	1	1	1	1
6	162006	스페이샤	Spacer	1	1	1	1
7	161012	요동압봉	Vibrating Presser Bar	1	1	1	1
8	1038	나사 9/64(40)×10	Screw 9/64(40)×10	2	2	2	2
9	*	노루발(내)	Presser Foot(In Side)	1	1	1	1
10	163005	침봉대안내	Needle Bar Guide	1	1	1	1
11	123062	와셔	Washer	2	2	2	2
12	9002	나사 11/64(40)×10	Screw 11/64(40)×10	2	2	2	2
13	168002	기름심지	Oil Wick	1	1	1	1
14	162007	침봉대안내핀	Pin	1	1	1	1
15	6068	나사 15/64(28)×8	Screw 15/64(28)×8	1	1	1	1
16	161015	침봉요동대	Needle Bar Vibrating Bracket	1	1	1	1
17	162008	안내핀	Guide Pin	1	1	1	1
18	1118	나사 M3×13.5	Screw M3×13.5	2	2	2	2
19	161016	침봉잡이	Needle Bar Holder	1	1	1	1
20	158006	기름심지	Oil Wick	1	1	1	1
21	162022 162009	침봉	Needle Bar	1		1	
22	*	침포	Needle Clamp		1		1
23	2021	나사 9/64(40)-3	Screw 9/64(40)-3		1		1
24	166002	바늘(DP×17 #23)	Needle (DP×17 #23)	1	1	1	1
25	152019	천평축	Thread Take-Up Shaft	1	1	1	1
26	118002	기름심지	Oil Wick	1	1	1	1
27	171020-H	천평	Thread Take-Up	1	1	1	1
28	152020	천평활자	Thread Take-Up Slide Block	1	1	1	1
29	1094	나사 15/64(28)×12	Screw 15/64(28)×12	1	1	1	1
30	152076	마개	Plug	1	1	1	1
31	152018	침봉크랭크핀	Needle Bar Crank Pin	1	1	1	1
32	158014	기름심지	Oil Wick	1	1	1	1
33	151012	침봉크랭크	Connecting Link	1	1	1	1
34	161028	요동축크랭크(좌)	Needle Bar Vibrating Crank (L)	1	1	1	1
35	172021	연결축	Crank Pin	1	1	1	1
36	162019	핀	Pin	1	1	1	1
37	161029	미끄럼블록(롤러)	Slide Block(Roller)	1	1	1	1
38	152021	카라	Coller	1	1	1	1
39	152023	요동축붓심(좌)	Needle Bar Vibrating Shaft Bush (L)	1	1	1	1
40	172024	요동축	Needle Bar Vibrating Shaft	1	1	1	1
41	9057	나사 1/4(24)-18	Screw 1/4(24)-18	1	1	1	1
42	161030	요동축크랭크(우)	Needle Bar Vibrating Crank (R)	1	1	1	1
43	152077	너트 5/16(24)	Nut 5/16(24)	1	1	1	1
44	161031	링크	Link	1	1	1	1
45	6093	나사 5/16(24)×26	Stud Screw 5/16(24)×26	1	1	1	1
46	158015	기름심지	Oil Wick	1	1	1	1
47	152092	요동축크랭크(우)	Needle Bar Vibrating Crank (R)	1	1	1	1
48	163008	바늘실걸이	Needle Thread Guide	1		1	
50	2009	나사 1/8(40)-4.5	Screw 1/8(40)-4.5	1		1	



F. 이송조절기 기구 / Feed Regulator Mechanism

H650, H6500

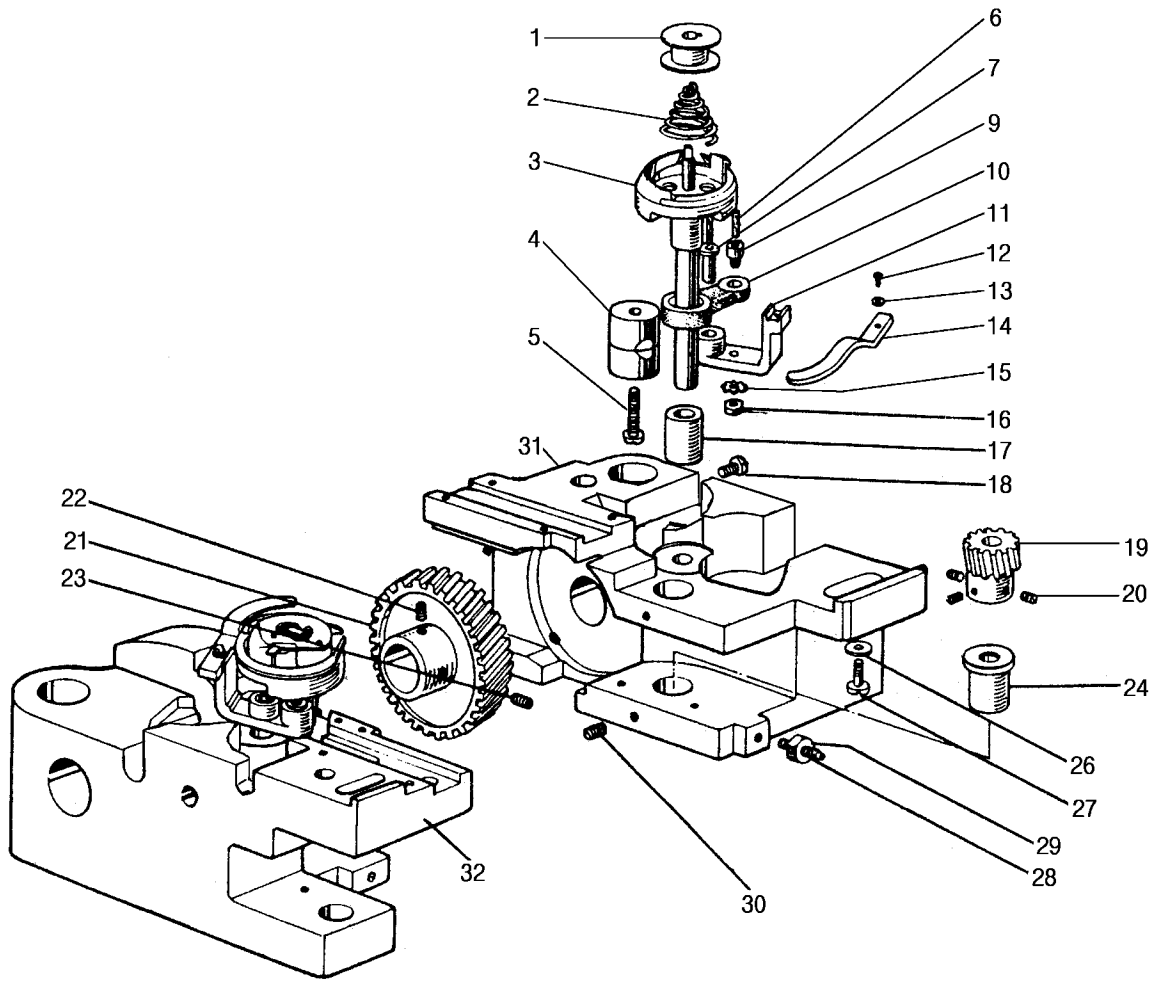
No.	Code No.	품 명	Parts of Name	Q'ty			
				H650-1	H650-2	H6500-1	H6500-2
1	161020	이송조절기	Feed Regulator	1	1	1	1
2	5006	나사 15/64(28)-8	Screw 15/64(28)-8	3	3	3	3
3	9028	나사 1/4(40)-10.5	Screw 1/4(40)-10.5	3	3	3	3
4	163004	링크	Link	1	1	1	1
5	162015	편심핀	Eccentric Pin	1	1	1	1
6	152028	역전축	Reverse Shaft			1	1
	152029			1	1		
7	151016	역전레바	Reverse Lever			1	1
	151054			1	1		
8	9057	나사 1/4(24)-18	Screw 1/4(24)-18	1	1	1	1
9	5009	나사 15/64(28)-12 나사	Screw 15/64(28)-12	1	1	1	1
10	113026	스프링 와셔	Spring Washer	1	1	1	1
11	151050	역전핸들	Reverse Handle			1	1
	151017			1	1		
12	155010-H	스프링	Spring	1	1	1	1
13	9039	나사 3/16(28)-15	Screw 3/16(28)-15	1	1	1	1
15	115003	스프링	Spring	1	1	1	1
16	112019	노찌핀	Pin	1	1	1	1
18	1074	나사 3/16(28)-16	Screw 3/16(28)-16	1	1	1	1
19	123086	압와셔	Presser Washer	1	1	1	1
20	124032	다이얼	Dial	1	1	1	1
21	134011	이송조절눈금판 9 mm	Length Control Plate 9 mm	1	1	1	1
22	112049	이송조절나사	Screw Bar	1	1	1	1
23	117022	O 링	O Ring	1	1	1	1
24	162017	핀	Crank Pin	1	1	1	1
25	151018	역전기크랭크	Reverse Bar Crank	1	1	1	1
27	153033	역전기 스톱퍼	Reverse Bar Stopper	1	1	1	1
28	162011	역전기	Reverse Bar	1	1	1	1
29	152032	핀	Pin	(1)	(1)	(1)	(1)
30	153034	안내판	Guide Plate	(2)	(2)	(2)	(2)
31	152033	슬라이드블록	Slide Block	(2)	(2)	(2)	(2)
32	153057	스프링걸이	Spring Hook	1	1	1	1



G. 하축 기구 / Lower Shaft Mechanism

H650, H6500

No.	Code No.	품명	Parts of Name	Q'ty			
				H650-1	H650-2	H6500-1	H6500-2
1	152034	하축붓심(좌)	Lower Shaft Bushing (L)	1	1	1	1
2	148022	펠트	Felt	2	2	2	2
3	152035	하축	Lower Shaft	1	1	1	1
4	152036-H	상하편심캠	Feed Lifting Cam	1	1	1	1
5	3087	1/4(40)-5.6	Screw 1/4(40)-5.6	2	2	2	2
6	152037	하축붓심(우)	Lower Shaft Bushing (R)	1	1	1	1
7	159004	하축붓심(중)(조)	Lower Shaft Bushing (M). ASM	1	1	1	1
8	169007	수평송연결로드(조)	Level Feed Connecting Rod. ASM	1	1	1	1
9	1050	나사 11/64(40)-8	Screw 11/64(40)-8	(3)	(3)	(3)	(3)
10	153035	덮개판	Cover Plate	(1)	(1)	(1)	(1)
11	161021	수평송연결로드	Level Feed Connecting Rod	(1)	(1)	(1)	(1)
12	156008	베어링	Bearing	(1)	(1)	(1)	(1)
13	162013	수평송캠	Level Feed Cam	(1)	(1)	(1)	(1)
14	161022	송링크	Feed Link	(1)	(1)	(1)	(1)
15	2072	나사 15/64(28)-14	Screw 15/64(28)-14	(3)	(3)	(3)	(3)
16	125033	링 5	E Ring 5	(4)	(4)	(4)	(4)
17	162014	송링크핀	Feed Link Pin	(2)	(2)	(2)	(2)
18	161023	수평송완(중)	Connecting Rod Crank	(1)	(1)	(1)	(1)
19	9057	나사 1/4(24)-18	Screw 1/4(24)-18	(2)	(2)	(2)	(2)
20	152040	베어링붓심	Bearing Bushing	1	1	1	1
21	3054	나사 1/4(40)-4	Screw 1/4(40)-4	4	4	4	4
22	156003	베어링	Bearing	1	1	1	1
23	153036	베어링잡이	Bearing Holder	1	1	1	1
24	4010	9/64(40)-7	Screw 9/64(40)-7	3	3	3	3
25	161024	수평송완(우)	Feed Rock Shaft Crank (R)	1	1	1	1
26	166001	너트 U M6	U-Nut M6	1	1	1	1
27	163007	와셔 6xø14x2.9	Washer 6xø14x2.9	1	1	1	1
28	6106	단나사 M6	Stud Screw M6	1	1	1	1
29	152041	수평송축붓심	Feed Rock Shaft Bushi (R)	1	1	1	1
30	3050	나사 1/4(24)-14	Screw 1/4(24)-14	2	2	2	2
31	112038	셋트카라	Set Collar	2	2	2	2
32	152043	수평송축	Feed Rock Shaft	1	1	1	1
33	158008	기름펠트	Oil Felt	2	2	2	2
34	112034	수평송축붓심	Feed Rock Shaft Bush	1	1	1	1
35	151023	송대완	Feed Rock Shaft Crank	1	1	1	1
36	9039	나사 3/16(28)-15	Screw 3/16(28)-15	2	2	2	2
37	2012	나사 1/8(40)-7나사	Screw 1/8(40)-7	2	2		
	9047					2	2
38	*	톱니	Feed Dog	1	1	1	1
39	161027	송대	Feed Bar	1	1	1	1
	151051				1		
40	2049	나사 11/64(40)-8	Screw 11/64(40)-8	1	1	1	1
41	158007	기름심지	Oil Wick	1	1	1	1
42	152045	송대축	Feed Bar Shaft	1	1	1	1
43	152081	1/8(40) 너트	Nut 1/8(40)		1		1
44	3003	나사 1/8(40)-15	Screw 1/8(40)-15		1		1
45	151025-H	송대포크	Feed Bar Fork (H)	1	1	1	1
46	2106	나사 9/64(40)-4.5	Screw 9/64(40)-4.5	1	1	1	1
47	158009	펠트	Felt	1	1	1	1
48	153075	와셔 6.2	Washer 6.2	1	1	1	1
49	2074	나사 15/64(28)-16.5	Screw 15/64(28)-16.5	1	1	1	1
50	113024	기름심지잡이	Oil Wick Holder	1	1	1	1
51	168003	기름심지	Oil Wick	2	2	2	2
54	158016	기름심지	Oil Wick	1			
55	3061	나사 1/4(40)-7	Screw 1/4(40)-7	1			
56	162026	복귀톱니	Return Feed Dog	2	2	2	2



H. 가마대 기구 / Hook Saddle Mechanism

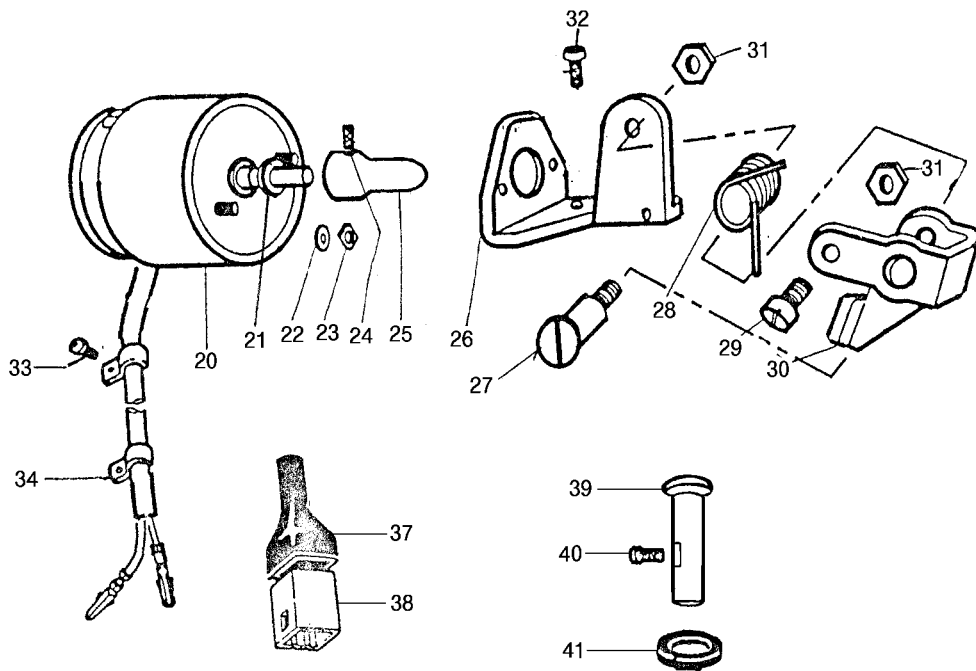
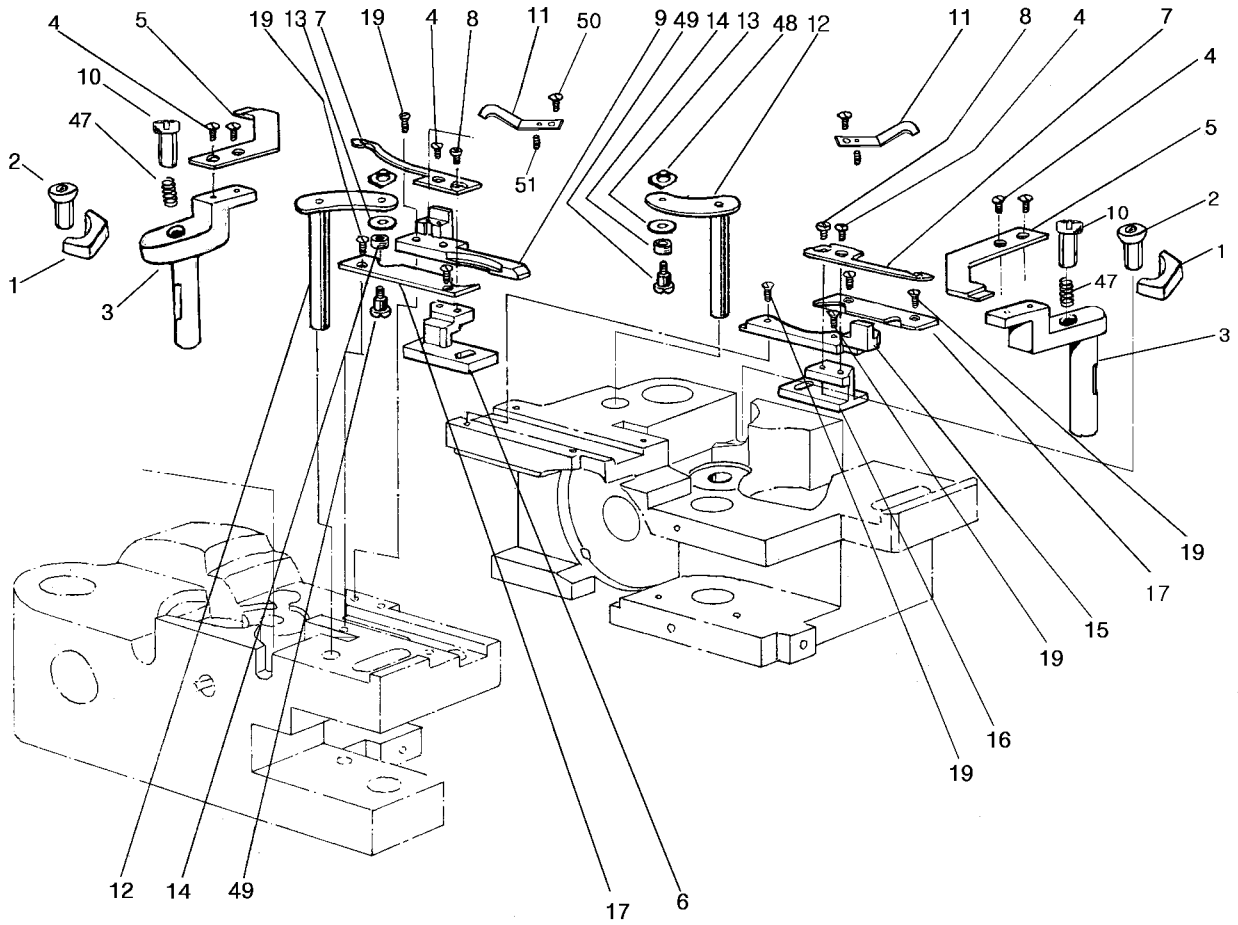
H650, H6500

No.	Code No.	품 명	Parts of Name	Q'ty			
				H650-1	H650-2	H6500-1	H6500-2
1	152046-H	보빈	Bobbin			1	2
	152093-H		Bobbin	1	2		
2	155013-H	공전방지스프링	Spring	1	2	1	2
3	HSH-12-15MM(410)	가마	Hook	1	2	1	2
4	152047	가마잡이(조)조인트)	Bushing. ASM	1	2	1	2
5	1098	15/64(28)-30 나사	Screw 15/64(28)-30	1	2	1	2
6	158010	기름심지 25 x 15	Oil Wick 2.5 x 15	1	2	1	2
7	152048	오픈너홀더핀	Opener Holder Pin	1	2	1	2
9	8029	3/16(32)-7.8 나사	Screw 3/16(32)-7.8	1	2	1	2
10	152050-H	링크	Link	1	2	1	2
11	151026-H	오픈너홀더(H)	Opener Holder	1	2	1	2
12	9046	9/64(40)-7 나사	Screw 9/64(40)-7	1	2	1	2
13	153038	와셔	Washer	1	2	1	2
14	153039-H	오픈너(H)	Opener (H)	1	2	1	2
15	156004	스프링와셔 5	Spring Washer 5	1	2	1	2
16	152082	3/16(32) 너트	Nut 3/16(32)	1	2	1	2
17	152051-H	가마축붓상(상)	Hook Shaft Bushing (U)	1	2	1	2
18	1071	3/16(28)x14 나사	Screw 3/16(28)-14	1	2	1	2
19	152053	기어(소)	Gear (S)	1	2	1	2
20	3054	1/4(40)-4 나사	Screw 1/4(40)-4	(3)	(6)	(3)	(6)
21	152054	기어 (대)	Gear (L)	1	2	1	2
22	3087	볼나사 1/4(40)-5.6	Screw 1/4(40)-5.6	1	2	1	2
23	3079	1/4(40)-6 나사	Screw 1/4(40)-6	1	2	1	2
24	152056	가마축붓상(하)	Hook Shaft Bushing (D)	1	2	1	2
26	153041	와셔	Washer	1	2	1	2
27	2082	1/4(24)-23 나사	Screw 1/4(40)-23	1	2	1	2
28	8034	3/16(28)-26 나사	Screw 3/16(28)-26	1	2	1	2
29	152109	손잡이너트	Thumb Nut	1	2	1	2
30	3032	15/64(28)-4 나사	Screw 15/64(28)-4	1	2	1	2
31	151042-H	가마대(우)	Hook Saddle (R)	1			
	151043-H					1	
32	151044-H	가마대(좌)	Hook Saddle (L)		1		
	151045-H						1

※ 650-1, 6500-1 사양은 가마대 기구가 우측만 부착함.

I. 시절 기구(1) / Thread Trimmer Mechanism(1)

H650, H6500

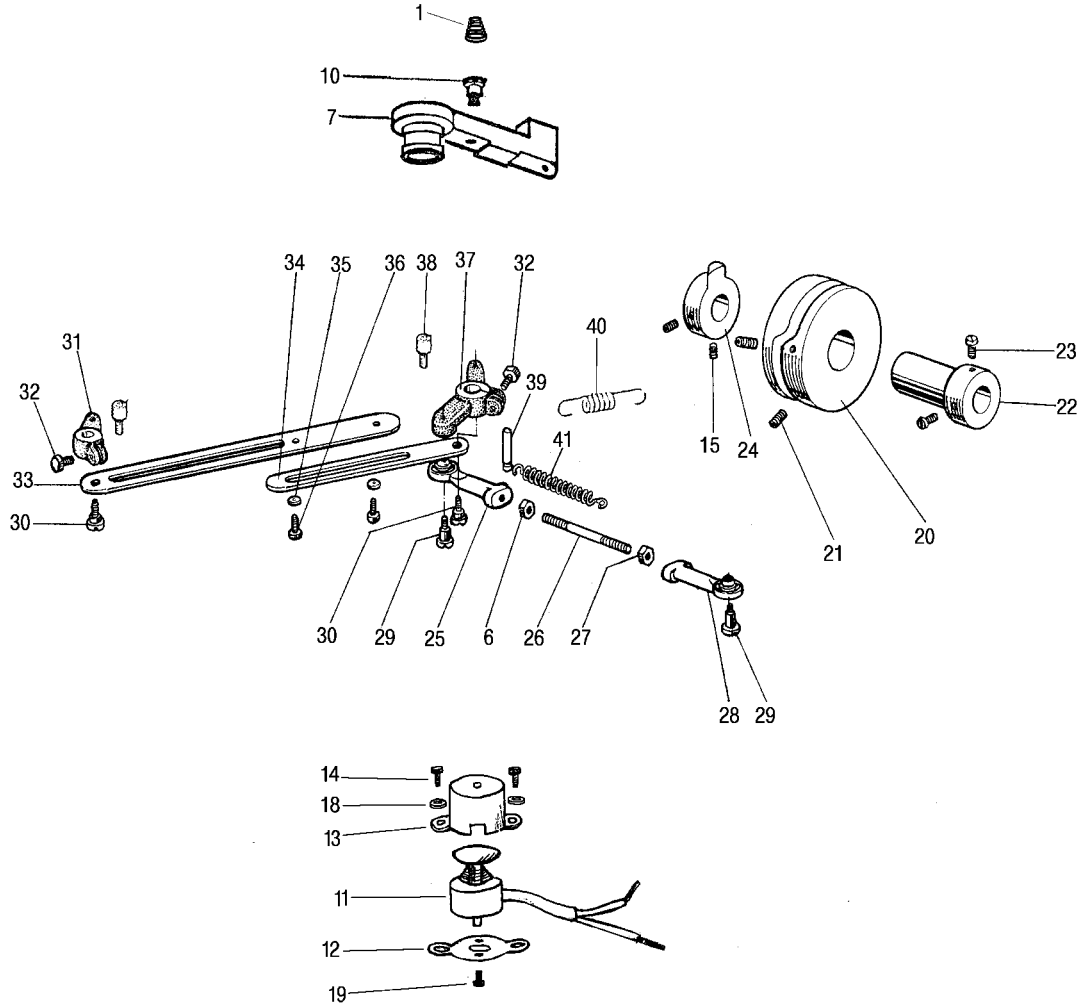


I. 시절 기구(1) / Thread Trimmer Mechanism(1)

H650, H6500

No.	Code No.	품 명	Parts Name	Q'ty			
				H650-1	H650-2	H6500-1	H6500-2
1	152057	고정칼잡이조인트	Fixed Knife Holder Joint			2	2
2	8135	테퍼나사 M6(P1.0)-10	Taper Screw M6(P1.0)-10			2	2
3	151027	고정칼홀더	Fixed Knife Holder			2	2
4	4008	침시나사 9/64(40)-5	Screw 9/64(40)-5			6	6
5	153088	고정칼	Fixed Knife			2	2
6	151028	이동칼브라켓(좌)	Moved Knife Bracket (L)			1	1
7	153089	이동칼	Moved Knife			2	2
8	2106	나사 9/64(40)-5	Screw 9/64(40)-5			2	2
9	151029	이동칼안내(좌)	Moved Knife Guide (L)			1	1
10	1040	나사 9/64(40)-12	Screw 9/64(40)-12			2	2
11	153182	스프링홀더	Spring Holder			2	2
12	151030	이동칼레버	Moved Knife Lever			2	2
13	223034	와셔 d3.8 D8 t1	Washer d3.8 D8 t1			2	2
14	152059	롤러	Roller			2	2
15	151031	이동칼안내(우)	Moved Knife Guide (R)			1	1
16	151032	이동칼브라켓(우)	Moved Knife Bracket (R)			1	1
17	153042	이동칼안내판	Moved Knife Guide Plate			2	2
19	4010	나사 9/64(40)-6.2	Screw 9/64(40)-6.2			8	8
20	159006	시절솔레노이드(조)	Trimmer Solenoid (ASM.)			1	1
21	127032	쿠션	Cushion			1	1
22	126002	스프링와셔	Spring Washer			2	2
23	122083	너트 M4	Nut M4			2	2
24	3020	나사 11/64(40)-6	Screw 11/64(40)-6			1	1
25	152060	플런저핀	Plunger Pin			1	1
26	153044	솔레노이드브라켓	Solenoid Bracket			1	1
27	6044	단나사	Stud Screw			1	1
28	155026	스프링	Spring			1	1
29	8103	특수나사	Wrench Screw			1	1
30	153045	시절솔레노이드 레버	Thread Trimmer Solenoid Lever			1	1
31	122080	너트 3/16(28)	Nut 3/16(28)			3	3
32	9055	나사 1/4(24)-13	Screw 1/4(24)-13			2	2
33	1020	나사 9/64(40)-5	Screw 9/64(40)-5			2	2
34	157006	코드잡이 DA-3N	Cord Holder DA-3N			2	2
37	124025	12 콘넥터캡	12 Connector Cap			1	1
38	124026	12 콘넥터	12 Connector			1	1
39	152061	시절캠레버축	Thread Trimmer Cam Lever Shaft			1	
	152061-H						1
40	2069	나사 15/64(28)-8.5	Screw 15/64(28)-8.5			1	1
41	157009	쿠션고무	Cushion Rubber			2	2
47	155036	스프링	Spring			2	2
48	182093	너트 9/64(40)	Nut 9/64(40)			2	2
49	6122	나사 9/64(40)-7	Screw 9/64(40)-7			2	2
50	2003	나사 3/32(56)-5	Screw 3/32(56)-5			2	2
51	3114	나사 M3(P0.5)-6	Screw M3(P0.5)-6			2	2

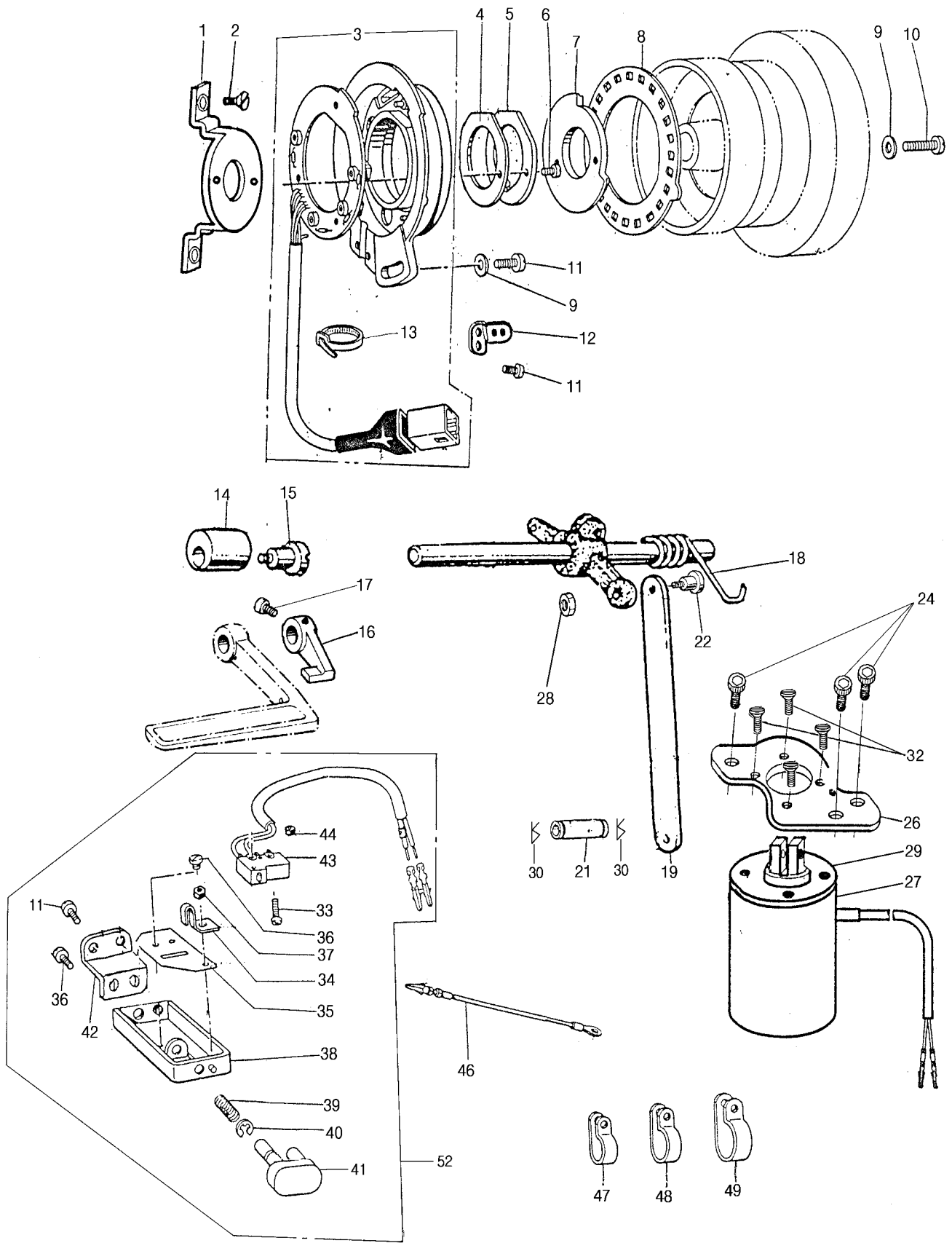
※H6500-1 사양은 가마대 기구 부품 우측만 부착



I. 시절 기구(2) / Thread Trimmer Mechanism(2)

H650, H6500

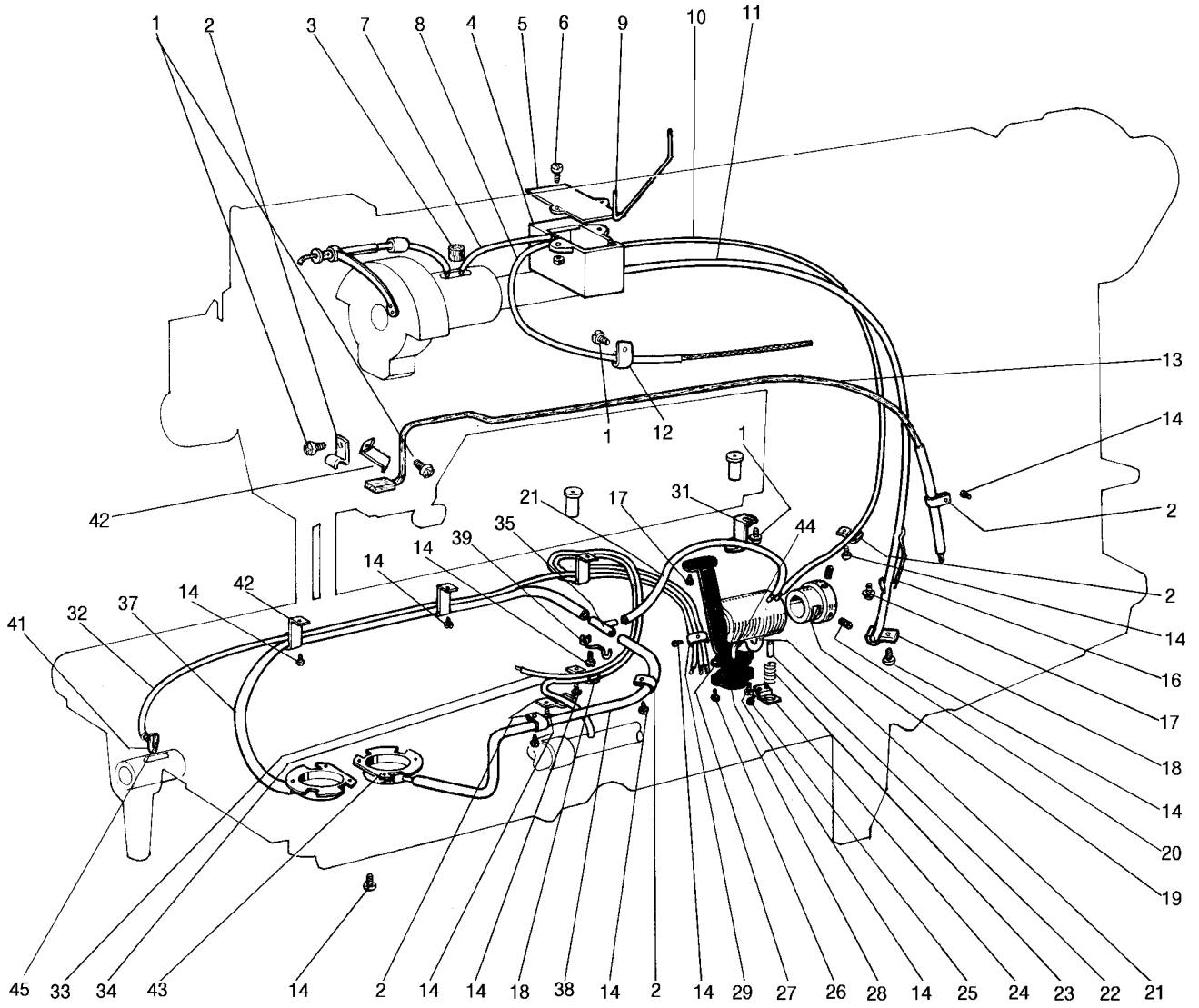
No.	Code No.	품 명	Parts of Name	Q'ty			
				H650-1	H650-2	H6500-1	H6500-2
1	265006	스프링	Spring			1	1
5	153049	와이어조절브라켓	Wire Releasing Bracket			1	1
6	122082	M5 너트	Nut M5			3	3
7	159035-S	시절캠레버(조)	Thread Trimmer Lever. ASM			1	1
8	152063	롤러	Roller			1	1
9	2028	9/64(40)-6 나사	Screw 9/64(40)x6			1	1
10	6035	단나사 3/16(28)	Stud Screw 3/16(28)			1	1
11	269005	솔레노이드(조)	Solenoid ASSY			1	1
12	263025	솔레노이드 브라켓	Solenoid Bracket			1	1
13	264001	솔레노이드커버	Solenoid Cover			1	1
14	1127	나사 11/64(40)-12	Screw 11/64(40)-12			2	2
15	3080	M5-5 나사	Screw M5-5			3	3
18	213013	와셔	Washer			3	3
19	4031	나사 M3(P0.5)-4	Screw M3(P0.5)-4			2	2
20	152065	시절캠	Thread Trimmer Cam			1	1
21	3077	M6 렌치무두나사	Screw M6			2	2
22	152083	시절캠보싱	Thread Trimmer Cam Bushing			1	1
23	3082	15/64(28)-8 나사	Screw 15/64(28)-8			2	2
24	151034	실늑추기캠	Thread Releasing Cam			1	1
25	156006	볼조인트베어링(좌)	Ball Joint Bearing (L)			1	1
26	8119	조절나사	Adjust Screw			1	1
27	152084	M5(좌)너트	Left-handed Nut M5			1	1
28	156007	볼조인트베어링(우)	Ball Joint Bearing (R)			1	1
29	6139	M5(p0.8) 나사	Screw M5(p0.8)			2	2
30	6067	단나사	Stud Screw				2
31	151035	이동칼레버(좌)	Moved Knife Lever (L)				1
32	9008	M6x15 볼트	Bolt M6x15			1	2
33	153055	연결판(좌)	Connecting Plate (L)				1
34	153051	연결판(우)	Connecting Plate (R)				1
35	123061	와셔	Washer				2
36	5026	M5x8 볼트	Bolt M5x8				2
37	151036	이동칼레버(우)	Moved Knife Lever (R)			1	1
38	8104	스톱퍼 핀	Stopper Pin			1	1
39	152067	스프링걸이	Spring Hook			1	1
40	155018	스프링	Spring			1	1
41	155019	스프링	Spring			1	1
42	122084	너트 11/64(40)	Nut			1	1



K. 위치검출기, 조작상자 기구 / Synchronizer, Operation Panel Mechanism

H650, H6500

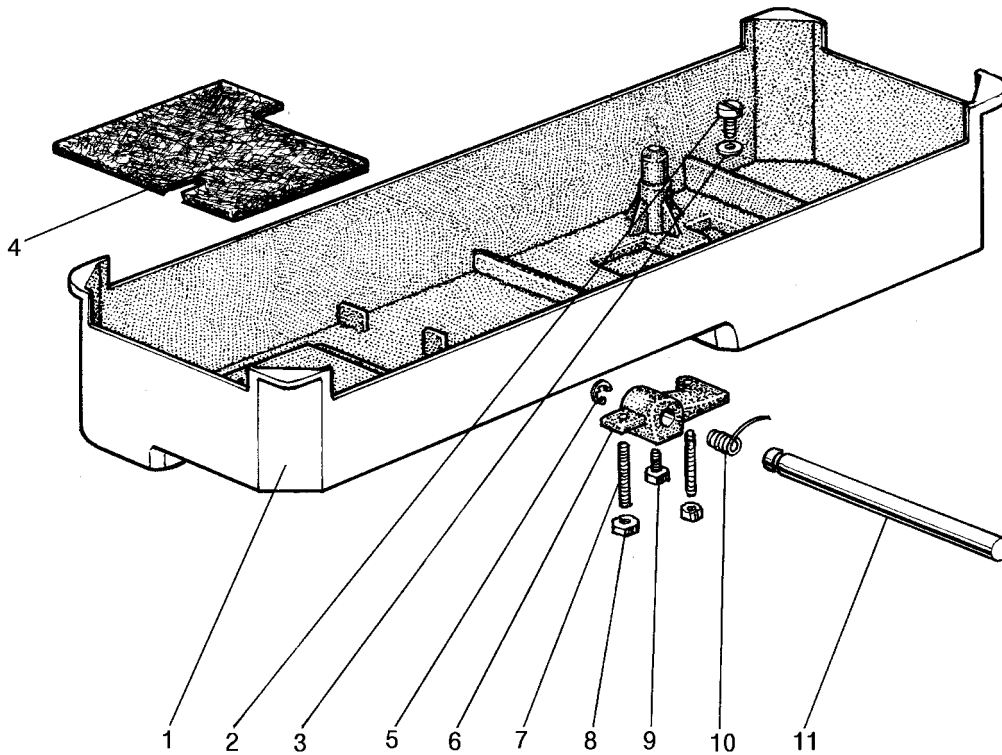
No.	Code No.	품 명	Parts Name	Q'ty			
				H650-1	H650-2	H6500-1	H6500-2
1	153052	위치검출기브라켓트	Synchronizer Bracket			1	1
2	4018	나사 11/64(40)-8	Screw 11/64(40)-8			2	2
3	129020	위치 검출기(조)	Synchronizer (ASM)			1	1
4	127003	패킹	Packing			1	1
5	123034	스토퍼	Stopper			1	1
6	1005	나사 M3-8	Screw M3-8			2	2
7	123033	침상반사판	Needle Upper Plate			1	1
8	154008	침하위치판	Needle Down Plate			1	1
9	123062	와셔 d5 D9.5 t1	Washer d5 D9.5 t1			2	2
10	1061	나사 11/64(40)-16	Screw 11/64(40)-16			2	2
11	1050	나사 11/64(40)-8	Screw 11/64(40)-8			3	3
12	153054	검출기스토퍼	Synchronizer Stopper			1	1
13	126003	밴드	Cable Tie			1	1
14	127025	편심고무	Eccentric Rubber			1	1
15	6056	나사 15/64(28)-6	Screw 15/64(28)-6			1	1
16	151037	역전레버	Reverse Lever			1	1
17	9039	나사 3/16(28)-15	Screw 3/16(28)-15			1	1
18	155020	스프링	Spring			1	1
19	153056	솔레노이드링크	Solenoid Link			1	1
21	122063	플런저핀	Plunger Pin			1	1
22	6066	나사 15/64(28)-14	Screw 15/64(28)-14			1	1
24	9055	나사 1/4(24)-13	Screw 1/4(24)-13			3	3
26	153058	역전솔레노이드브라켓트	Reverse Solenoid Bracket			1	1
27	159016	역전솔레노이드(조)	Reverse Solenoid (ASM)			1	1
28	122088	너트 15/64(28)	Nut 15/64(28)			1	1
29	137010	패킹	Packing			1	1
30	206004	스냅핀 (No.-5)	Snap Pin(No.-5)			2	2
32	4030	나사11/64(40)-8	Screw 11/64(40)-8			4	4
33	1111	나사 M2-10	Screw M2-10			2	2
34	123071	판스프링	Plate Spring			1	1
35	123031	절연판	Insulation Plate			1	1
36	1112	나사 M4-5	Screw M4-6			3	3
37	122083	너트 M4	Nut M4			1	1
38	123030	스위치브라켓트	Bracket for Touch Switch			1	1
39	125028	스프링	Spring			1	1
40	125032	E형 멈춤링 3	E-Type Stop Ring 3			1	1
41	129045	보턴(조)	Button(ASSEMBLY)			1	1
42	133028	브라켓트	Bracket			1	1
43	124020	마이크로스위치	Micro Switch			1	1
44	122089	너트 M2	Nut M2			2	2
46	129032	접지선(조)	Earth Wire ASSY.			1	1
47	157006	코드잡이 DA-3N	Cord Holder DA-3N			2	2
48	157007	코드잡이 DA-5N	Cord Holder DA-5N			5	5
49	157008	코드잡이 DA-10N	Cord Holder DN-10N			1	1
50	206004	스냅핀(SIZE NO.-5)	Snap Pin (SIZE NO.-5)			2	2
52	129044	마이크로스위치(조)	Micro Switch (ASM)			1	1



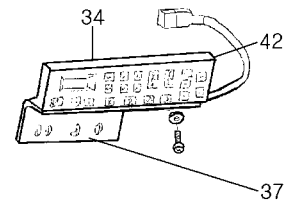
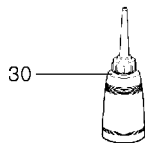
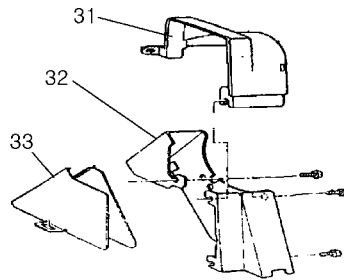
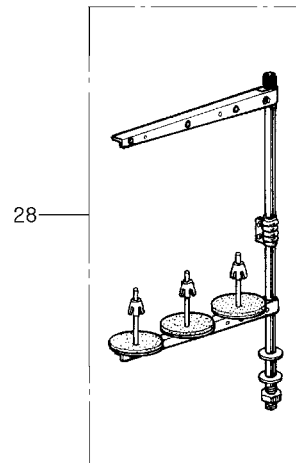
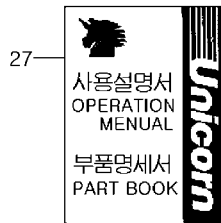
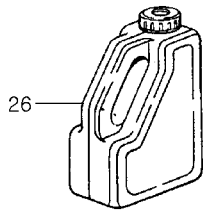
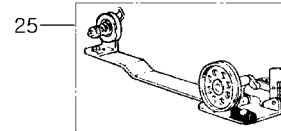
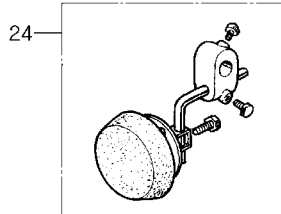
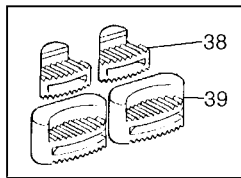
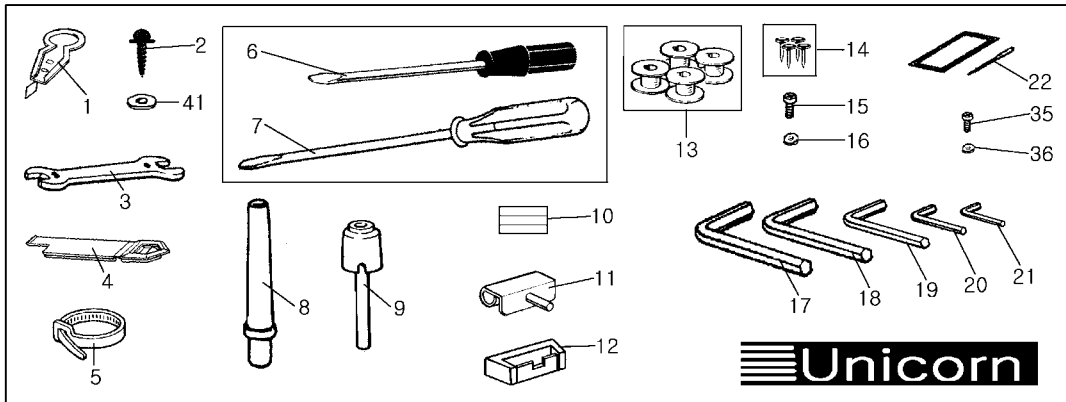
L. 급유 기구 / Oil Lubrication Mechanism

H650, H6500

No.	Code No.	품 명	Parts of Name	Q'ty			
				H650-1	H650-2	H6500-1	H6500-2
1	1047	11/64(40)-6 나사	Screw 11/64(40)-6	3	3	3	3
2	113038	철계코드잡이(소)	Steel Cord Holder (S)	7	7	7	7
3	158017	펠트	Felt	1	1	1	1
4	159010	기름탱크(조)	Oil Tank. ASM	1	1	1	1
5	153061	기름탱크 카바	Oil Tank Cover	1	1	1	1
6	1114	M4-16 나사	Screw M4-16	2	2	2	2
7	159011	기름파이프심지(조)	Oil Wick. ASM	1	1	1	1
8	159012	기름파이프심지(조)	Oil Wick. ASM	1	1	1	1
9	155021	파이프잡이	Pipe Holder	1	1	1	1
10	157011	파이프 3Dx400	Pipe 3Dx400	2	2	2	2
11	157010	파이프 5Dx400	Pipe 5Dx400	1	1	1	1
12	113038	코드잡이(대)	Cord Holder (L)	1	1	1	1
13	159013	흡상기름튜브(조)	Oil Return Tube. ASM	1	1	1	1
14	1020	9/64(40)-5 나사	Screw 9/64(40)-5	12	12	12	12
16	155022	파이프잡이	Pipe Holder	1	1	1	1
17	1050	11/64(40)-8 나사	Screw 11/64(40)-8	3	3	3	3
18	153081	파이프잡이	Pipe Holder	2	2	2	2
19	152069	붓싱	Bushing	1	1	1	1
20	3023	11/64(40)-10 나사	Screw 11/64(40)-10	2	2	2	2
21	157012	3Dx1x90 파이프	Pipe 3Dx1x90	2	2	2	2
22	152070	플런저	Plunger	1	1	1	1
23	155023	스프링	Spring	1	1	1	1
24	153062	스프링잡이	Spring Holder	1	1	1	1
25	1007	1/8(44)-4 나사	Screw 1/8(44)-4	1	1	1	1
26	1031	9/64(40)-8 나사	Screw 9/64(40)-8	1	1	1	1
27	153063	펌프브라켓트	Pump Bracket	1	1	1	1
28	154011	필터(조)	Filter. ASM	1	1	1	1
29	153065	파이프잡이	Pipe Holder	1	1	1	1
31	153066	펌프브라켓트지지대	Pump Bracket Plate	1	1	1	1
32	157013	30x0.5x410 파이프	Pipe 30x0.5x410	1	1	1	1
33	159014	기름파이프심지(조)	Oil Wick Pipe. ASM	1	1	1	1
34	159015	기름파이프심지(조)	Oil Wick Pipe. ASM	1	1	1	1
35	154012	파이프콘넥터	Pipe Connector		1		1
37	157014	3Dx1x480 파이프	Pipe 3Dx1x445		1		1
38	157015	3Dx1x325 파이프	Pipe 3Dx1x300	1	1	1	1
39	155024	파이프잡이	Pipe Holder		1		1
41	158018	기름심지 \varnothing 2.5x65	Oil Wick \varnothing 2.5x65	3	3	3	3
42	153067	파이프잡이	Pipe Holder	2	2	2	2
43	153068	기름카바(조)	Oil Cover. ASM		2		2
44	154010	파이프	Pipe	1	1	1	1
45	158019	기름심지 \varnothing 2.5x545	Oil Wick \varnothing 2.5x545	1	1	1	1









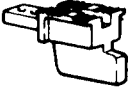




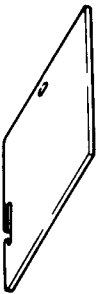

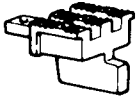

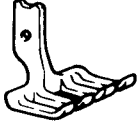

No.	Code No.	품 명	Parts Name	Q'ty			
				H650-1	H650-2	H6500-1	H6500-2
1	154018	유수판(조)	Oil Pan(ASSY)	1	1	1	1
2	1105	나사 5/16(28)-10	Screw 5/16(28)-10	(1)	(1)	(1)	(1)
3	117012	O링	O Ring	(1)	(1)	(1)	(1)
4	158011	펠트	Felt	(1)	(1)	(1)	(1)
5	115014	E형 멈춤링 9	E-Type Stop Ring 9	(1)	(1)	(1)	(1)
6	151046	무릎올림대	Knee Lifter Bracket	(1)	(1)	(1)	(1)
7	3048	나사 15/64(28)-30	Screw 15/64(28)-30	(2)	(2)	(2)	(2)
8	112053	너트 15/64(28)	Nut 15/64(28)	(2)	(2)	(2)	(2)
9	7007	나사 15/64(28)-14.5	Screw 15/64(28)-14.5	(1)	(1)	(1)	(1)
10	155025	스프링	Spring	(1)	(1)	(1)	(1)
11	152071	무릎올림형축	Knee Lifter Shaft	(1)	(1)	(1)	(1)



Z. 부속품 / Accessories

H650, H6500

No.	Code No.	품 명	Parts Name	Q'ty			
				H620	H620H	H6200	H6200H
1	829	바늘실걸이	Thread a Needle Kit	1	1	1	1
2	816	목나사	Wood Screw	2	2	2	2
3	835	스패너	Spanner	1	1	1	1
4	114020	벨트커버안전장치	Belt Cover Safety Devices	1	1	1	1
5	126003	밴드	Cable Tie			2	2
6	813	드라이버(소)	Driver(S)	1	1	1	1
7	814	드라이버(중)	Driver(M)	1	1	1	1
8	802	베개	Head Rest	1	1	1	1
9	154019	무릎올림로드	Knee Lifter Rod	1	1	1	1
10	805	자석	Magnet	1	1	1	1
11	810	두부힌지	Head Hinge	1	1	1	1
12	809	힌지고무	Hinge Rubber	2	2	2	2
13	152046-H 152093-H	보빈	Bobbin			2	4
14	826	못	Nail	4	4	4	4
15	1126	나사 11/64(40)-10	Screw 11/64(40)-10	3	3	3	3
16	213013	와셔	Washer	3	3	3	3
17	867	렌치 5mm	Hexagonal Wrench 5mm	1	1	1	1
18	830	렌치 4mm	Hexagonal Wrench 4mm	1	1	1	1
19	824	렌치 3mm	Hexagonal Wrench 3mm	1	1	1	1
20	828	렌치 2.5mm	Hexagonal Wrench 2.5mm	1	1	1	1
21	823	렌치 2mm	Hexagonal Wrenc 2mm	1	1	1	1
22	166002	바늘 DP×17 #23	Needle DP×17 #23	5	5	5	5
23	804	부속품봉지	Accessories Bag	1	1	1	1
24	821	무릎올림(조)	Knee Lifter ASSY	1	1	1	1
25	852	시권(조)	Bobbin Winder ASSY	1	1	1	1
26	801	기름통	Oil Tank	1	1	1	1
27	168009	사용자 매뉴얼	Operation Manual	1	1	1	1
28	853	시립봉(조)	Thread Stand ASSY	1	1	1	1
29	803	두부커버	Head Cover	1	1	1	1
30	827	기름통(소)	Oil Tank(S)	1	1	1	1
31	264003	풀리커버	Pully Cover	1	1	1	1
32	134026	벨트커버	Belt Cover	1	1	1	1
33	134017	삼각대커버	Tri-Belt Cover	1	1	1	1
34	133051	조작상자덮개	Panel Cover			1	1
35	136001	스프링와셔	Spring Washer			2	2
36	1005	나사 M3-8	Screw M3-8			2	2
37	153069	조작상자브라켓트	Operation Panel Bracket			1	1
38	807	쿠션고무(소)	Cushion Rubber(S)	1	1	1	1
39	808	쿠션고무(대)	Cushion Rubber(L)	1	1	1	1
40	815	드라이버(대)	Driver (L)	1	1	1	1
41	223027	와셔	Washer	2	2	2	2
42		조작상자	Operation Panel			1	1

침판 Needle Plate	톱니 Feed Dog	노루발(내) Presser Foot (Inside)	노루발(외) Presser Foot (Outside)	침포 Needle Clamp	미끄럼판(좌) Slide Plate(L)	미끄럼판(우) Slide Plate(R)
 <p>1/8~5/16</p>	 <p>1/8~5/16</p>	 <p>1/8~5/16</p>	 <p>1/8~5/16</p>	 <p>1/8~5/16</p>		
 <p>3/8~5/8</p>	 <p>3/8~5/8</p>	 <p>3/8~5/8</p>	 <p>3/8~5/8</p>	 <p>3/8~5/8</p>		
 <p>3/4~1</p>	 <p>3/4~1</p>	 <p>3/4~1</p>	 <p>3/4~1</p>	 <p>3/4~1</p>		

게이지 류 / Gauge Parts List

H650, H6500

게이지크기 Gauge Size Inch(mm)	침 판 Needle Plate	톱 니 Feed Dog	노루발(내) Presser Foot(in)	노루발(외) Presser Foot(out)	침포 Needle Clamp	미끄럼판(좌) Slide Plate(L)	미끄럼판(우) Slide Plate(R)
---------------------------------	------------------------	-----------------	-------------------------------	--------------------------------	-----------------------	------------------------------	------------------------------

2본침용 (Type Twin Needle) LT2-H650-2

1/8 (3.18)	153110-H	151071-H	161044	161035	161053	153072	153071
5/21 (3.97)	153111-H	151072-H	161045	161036	161054		
3/16 (4.76)	153112-H	151073-H	161046	161037	161055		
1/4 (6.35)	153114-H	151075-H	161014	161007	161018		
5/16 (7.94)	153115-H	151076-H	161047	161038	161056	153141	
3/8 (9.53)	153116-H	151077-H	161048	161039	151057		
1/2 (12.7)	153117-H	151078-H	161049	161040	161058	153142	
5/8 (15.88)	153118-H	151079-H	161050	161041	161059		
3/4 (19.05)	153119-H	151080-H	161051	161042	161060	153143	153147
1 (25.4)	153120-H	151081-H	161052	161043	161061	153144	

2본침용 (Type Twin Needle) LT2-H6500-2

1/8 (3.18)	153110-H	151071-H	161044	161035	161053	153084	153083
5/21 (3.97)	153111-H	151072-H	161045	161036	161054		
3/16 (4.76)	153112-H	151073-H	161046	161037	161055		
1/4 (6.35)	153114-H	151075-H	161014	161007	161018		
5/16 (7.94)	153115-H	151076-H	161047	161038	161056	153148	
3/8 (9.53)	153116-H	151077-H	161048	161039	151057		
1/2 (12.7)	153117-H	151078-H	161049	161040	161058	153149	
5/8 (15.88)	153118-H	151079-H	161050	161041	161059		
3/4 (19.05)	153119-H	151080-H	161051	161042	161060	153150	153154
1 (25.4)	153120-H	151081-H	161052	161043	161061	153151	

1본침용 (Type Single Needle) LT2-H650-1

	161002	161025	161066	161067		153072	153071
--	--------	--------	--------	--------	--	--------	--------

1본침용 (Type Single Needle) LT2-H6500-1

	161033	161026	161066	161067		153084	153083
--	--------	--------	--------	--------	--	--------	--------